



DAEHWA E/M CO.,LTD.

SPEED CONTROL INDUCTION MOTORS





SPEED CONTROL INDUCTION MOTORS

Frame size 61mm sq. (2.4 in. sq.)

6W (1/124 HP)

단상

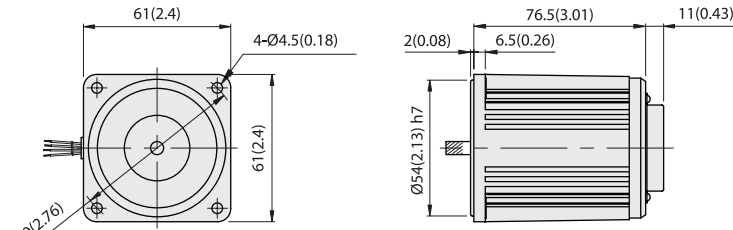
LEAD WIRE TYPE

DIMENSIONS

SPEED-TORQUE CURVE

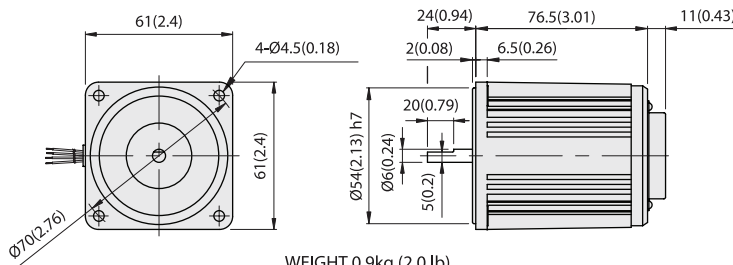
Unit : mm(inch)

E616P□LT



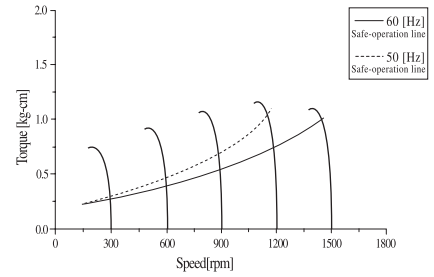
WEIGHT 0.9kg (2.0 lb)

E616D□LT



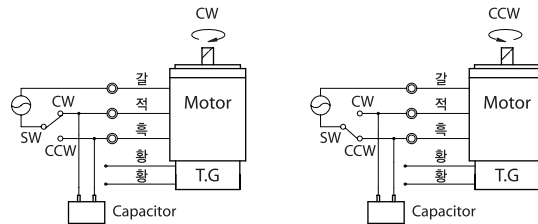
WEIGHT 0.9kg (2.0 lb)

Single phase E616□□LT



결선도

표준 및 T.내장 공통



모터의 회전방향은 출력축에서 보았을 때를 기준합니다.

SPECIFICATIONS

연속운전, 절연등급 A or E종, 4극

Model	Maximum Output		Voltage (V)	Frequency (Hz)	Input (W)	Max. Current (A)	Permissible Torque						Speed Range (rpm)	Starting Torque			Capacitor (µF)
	(HP)	(W)					1200(rpm)		90(rpm)		(kg-cm)	(N-m)		(oz-in)	(kg-cm)	(N-m)	
E616□CLT	1/124	6	1 Ø100	50	25	0.28	0.48	0.047	6.67	0.4	0.039	5.55	90~1400	0.46	0.045	6.39	3
				60	25	0.26	0.48	0.047	6.67	0.4	0.039	5.55	90~1700	0.46	0.045	6.39	
E616□DLT	1/124	6	1 Ø200	50	25	0.14	0.48	0.047	6.67	0.4	0.039	5.55	90~1400	0.46	0.045	6.39	0.8
				60	25	0.14	0.48	0.047	6.67	0.4	0.039	5.55	90~1700	0.46	0.045	6.39	
E616□BLT	1/124	6	1 Ø220	60	25	0.15	0.5	0.049	6.94	0.42	0.041	5.83	90~1700	0.47	0.046	6.53	0.7
E616□ELT	1/124	6	1 Ø115	60	25	0.28	0.5	0.049	6.94	0.42	0.041	5.83	90~1700	0.45	0.044	6.25	2.5
E616□XLT	1/124	6	1 Ø220~240	50	25	0.15	0.47	0.046	6.53	0.32	0.031	4.44	90~1400	0.45	0.044	6.25	0.7

* 모델명중 화색은 UL규정을 따르는 임피던스 protected type입니다.
* 모델명중 진화색은 CE규정을 따르는 임피던스 protected type입니다.
* 해외인증제품은 모델명 뒤에 E□□□□□-CE or UL로 구분하여 출고되며 절연등급은 B종입니다.



GEARHEADS

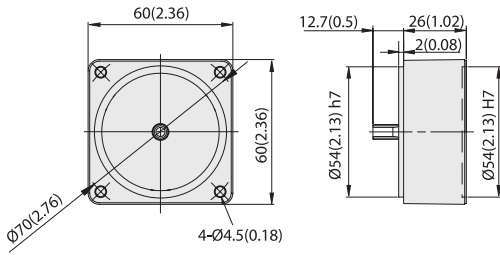
Frame size 61mm sq. (2.4 in.sq.)

METAL TYPE & BALL BEARING TYPE

DIMENSIONS

중간감속기 (DECIMAL GEARHEAD)

E6G10D



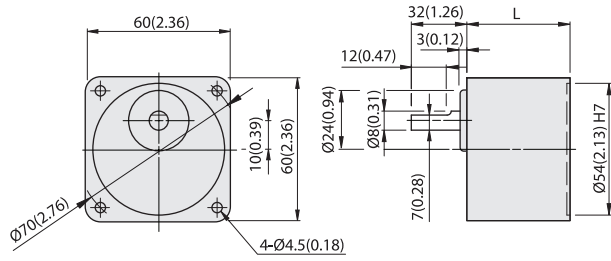
WEIGHT 0.2kg(0.44 lb)



GEARHEAD

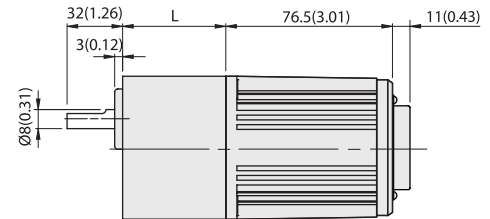
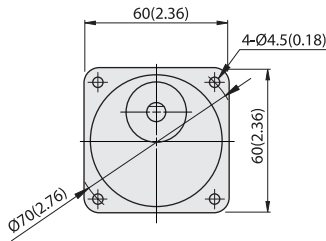
Unit : mm(inch)

E6HD□M(B)



GEAR RATIO	L		WEIGHT		BOLT
	mm	in	kg	lb	
1/3~1/18	30	1.18	0.3	0.66	M4x50
1/20~1/200	41	1.57	0.4	0.88	M4x60

E6HD□M(B) + E6I6P□LT



GEARHEAD의 허용 토크

MODEL	Speed(rpm)		500	300	200	120	100	60	50	30	20	15	10	6	5	3	2	1		
	Ratio	Speed	50Hz	3	5	7.5	12.5	15	25	30	50	75	100	150	250	300	500	750	1500	
E6HD□M E6HD□B E6G10D(DECIMAL)	High	kg-cm	60Hz	3.6	6	9	15	18	30	36	60	90	120	180	300	360	600	900	1800	
			High	1.2	1.9	2.9	4.9	5.8	8.8	10.5	15.8	23.8	30	30	30	30	30	30	30	30
	Low	N-m	High	0.11	0.19	0.29	0.48	0.57	0.89	1.03	1.55	2.33	2.94	2.94	2.94	2.94	2.94	2.94	2.94	2.94
			Low	0.10	0.16	0.24	0.40	0.48	0.72	0.86	1.29	1.94	2.59	2.94	2.94	2.94	2.94	2.94	2.94	2.94
	High	oz-in	High	16	27	40	67	81	122	146	220	330	417	417	417	417	417	417	417	417
			Low	13	22	34	56	67	101	122	183	275	367	417	417	417	417	417	417	417

- * Motor와 감속기가 직결된 상태의 허용토크입니다.
- * 감속기 모델명의 □는 감속비율을 표시합니다.
- * 실제 회전속도는 동기속도보다 2~15%정도 낮습니다.
- * ■색칠된 부분은 Motor의 출력축 회전방향과 반대일 경우를 의미합니다.

With Decimal Gearhead



SPEED CONTROL INDUCTION MOTORS

Frame size 70mm sq. (2.76 in. sq.)

15W (1/50 HP)

단상

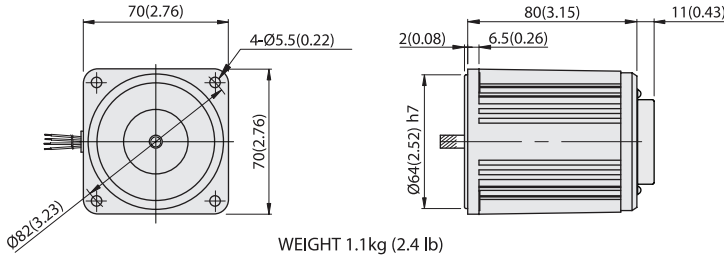
LEAD WIRE TYPE

DIMENSIONS

SPEED-TORQUE CURVE

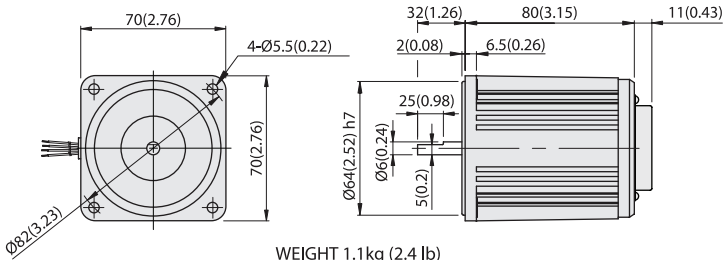
Unit : mm(inch)

E7115P□LT



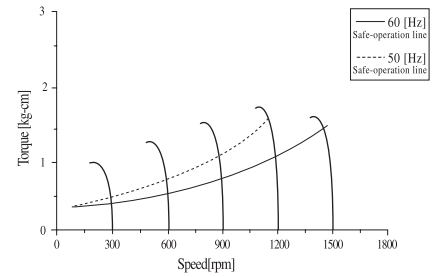
WEIGHT 1.1kg (2.4 lb)

E7115D□LT



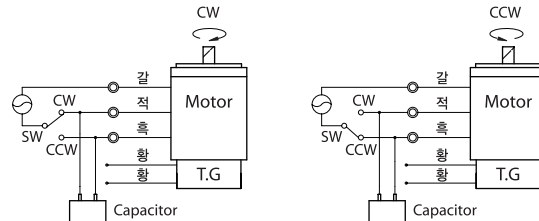
WEIGHT 1.1kg (2.4 lb)

Single phase E7115□□LT



결선도

표준 및 T.내장 공통



모터의 회전방향은 출력축에서 보았을 때를 기준으로 합니다.

SPECIFICATIONS

연속운전, 절연등급 A or E종, 4극

Model	Maximum Output		Voltage (V)	Frequency (Hz)	Input (W)	Max. Current (A)	Permissible Torque						Speed Range (rpm)	Starting Torque			Capacitor (µF)
	(HP)	(W)					1200(rpm)			90(rpm)				(kg-cm)	(N-m)	(oz-in)	
E7115□CLT	1/50	15	1∅100	50	45	0.50	1.1	0.108	15.28	0.42	0.041	5.83	90~1400	0.8	0.078	11.11	4
				60	45	0.48	1	0.098	13.89	0.42	0.041	5.83	90~1700	0.8	0.078	11.11	
E7115□DLT	1/50	15	1∅200	50	45	0.26	1.1	0.108	15.28	0.42	0.041	5.83	90~1400	1	0.098	13.89	1.8
				60	45	0.26	1	0.098	13.89	0.42	0.041	5.83	90~1700	1	0.098	13.89	
E7115□BLT	1/50	15	1∅220	60	45	0.26	1.2	0.118	16.66	0.54	0.053	7.50	90~1700	1.1	0.108	15.28	1.2
E7115□ELT	1/50	15	1∅115	60	45	0.47	1.15	0.113	15.97	0.5	0.049	6.94	90~1700	1	0.098	13.89	4
E7115□XLT	1/50	15	1∅220~240	50	45	0.23	1.25	0.123	17.36	0.56	0.055	7.78	90~1400	0.9	0.088	12.50	1.5

* 모델명중 화색은 UL규정을 따르는 Thermally protected type입니다.
 * 모델명중 진화색은 CE규정을 따르는 Thermally protected type입니다.
 * 해외인증제품은 모델명 뒤에 E□□□□□-CE or UL로 구분하여 출고되며 절연등급은 B종입니다.



GEARHEADS

Frame size 61mm sq. (2.4 in.sq.)

METAL TYPE & BALL BEARING TYPE

DIMENSIONS

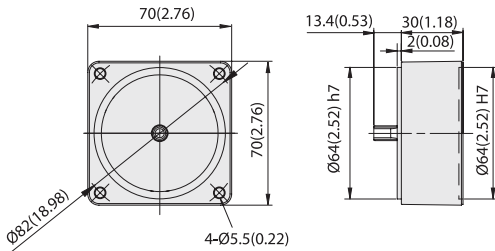
중간감속기 (DECIMAL GEARHEAD)

GEARHEAD

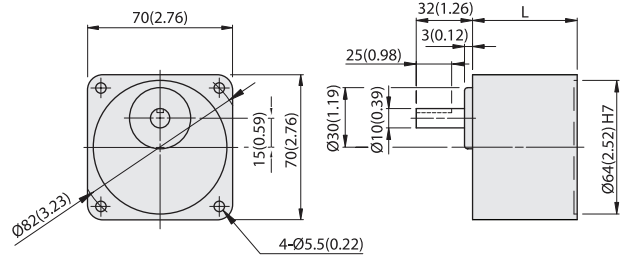
Unit : mm(inch)

E7G10D

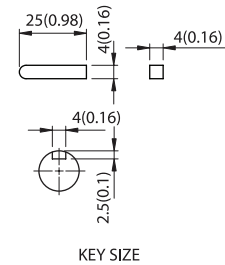
E7HK□M(B)



WEIGHT 0.3kg(0.66 lb)



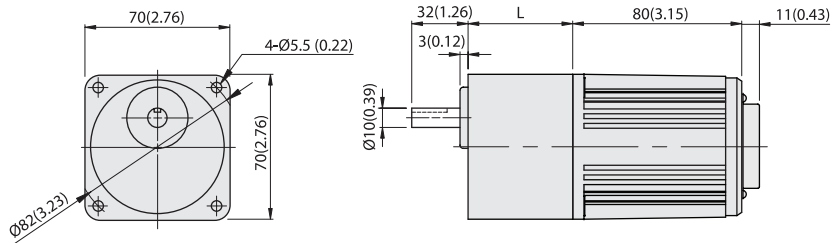
GEAR RATIO	L		WEIGHT		BOLT
	mm	in	kg	lb	
1/3~1/18	32	1.26	0.45	1	M5x50
1/20~1/200	42	1.65	0.55	1.2	M5x60



KEY SIZE



E7HK□M(B) + E7115P□LT



GEARHEAD의 허용 토크

MODEL	Speed(rpm)		500	300	200	120	100	60	50	30	20	15	10	6	5	3	2	1		
	Ratio	Speed	50Hz	3	5	7.5	12.5	15	25	30	50	75	100	150	250	300	500	750	1500	
E7HK□M E7HK□B E7G10D(DECIMAL)	High	kg-cm	60Hz	3.6	6	9	15	18	30	36	60	90	120	180	300	360	600	900	1800	
			2.7	4.5	6.7	11.1	13.4	20.1	24.1	36.3	50	50	50	50	50	50	50	50	50	50
	Low	N-m	1.0	1.7	2.6	4.3	5.1	7.7	9.2	13.9	20.8	27.7	41.6	50	50	50	50	50	50	50
			0.26	0.44	0.65	1.09	1.31	1.97	2.36	3.56	4.90	4.90	4.90	4.90	4.90	4.90	4.90	4.90	4.90	4.90
	High	oz-in	0.10	0.17	0.25	0.42	0.50	0.75	0.90	1.36	2.04	2.72	4.07	4.90	4.90	4.90	4.90	4.90	4.90	4.90
			37	62	93	155	186	279	335	504	694	694	694	694	694	694	694	694	694	694
Low		14	24	35	59	71	106	128	192	289	385	577	694	694	694	694	694	694	694	

With Decimal Gearhead

- * Motor와 감속기가 직결된 상태의 허용토크입니다.
- * 감속기 모델명의 □는 감속비율을 표시합니다.
- * 실제 회전속도는 동기속도보다 2~15%정도 낮습니다.
- * ■색칠된 부분은 Motor의 출력축 회전방향과 반대일 경우를 의미합니다.



SPEED CONTROL INDUCTION MOTORS

Frame size 80mm sq. (3.15 in. sq.)

25W (1/30 HP)

단상

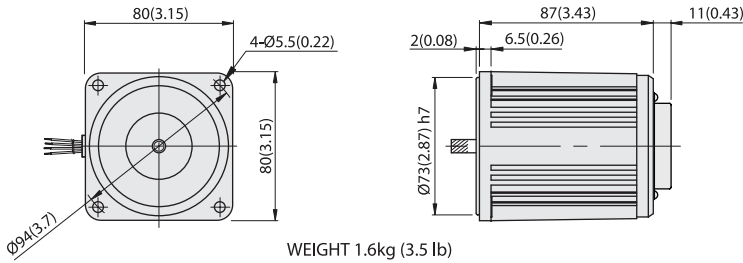
LEAD WIRE TYPE

DIMENSIONS

SPEED-TORQUE CURVE

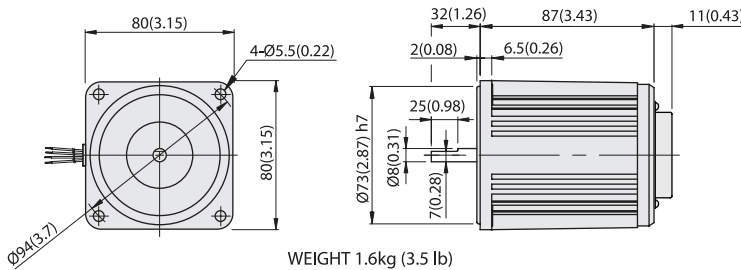
Unit : mm(inch)

E8125P□LT



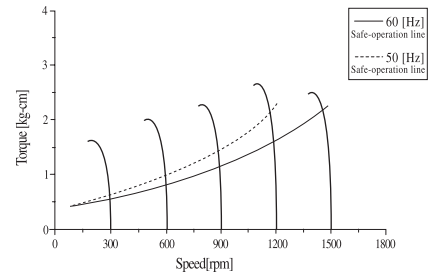
WEIGHT 1.6kg (3.5 lb)

E8125D□LT



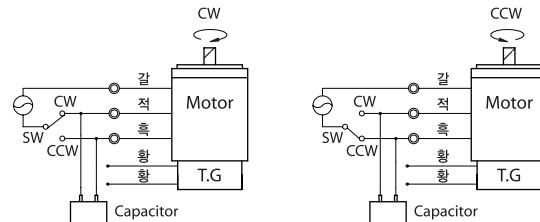
WEIGHT 1.6kg (3.5 lb)

Single phase E8125□□LT



결선도

표준 및 T.내장 공통



모터의 회전방향은 출력축에서 보았을 때를 기준합니다.

SPECIFICATIONS

연속운전, 절연등급 A or E종, 4극

Model	Maximum Output		Voltage (V)	Frequency (Hz)	Input (W)	Max. Current (A)	Permissible Torque						Speed Range (rpm)	Starting Torque			Capacitor (µF)
	(HP)	(W)					1200(rpm)		90(rpm)		(kg-cm)	(N-m)		(oz-in)	(kg-cm)	(N-m)	
E8125□C LT	1/30	25	1 Ø100	50	60	0.71	1.75	0.172	24.30	0.55	0.054	7.64	90~1400	1.25	0.123	17.36	6
				60	60	0.65	2	0.196	27.77	0.55	0.054	7.64	90~1700	1.25	0.123	17.36	
E8125□D LT	1/30	25	1 Ø200	50	60	0.35	1.75	0.172	24.30	0.55	0.054	7.64	90~1400	1.45	0.142	20.14	1.8
				60	60	0.35	2	0.196	27.77	0.55	0.054	7.64	90~1700	1.45	0.142	20.14	
E8125□B LT	1/30	25	1 Ø220	60	65	0.37	2	0.196	27.77	0.60	0.059	8.33	90~1700	1.6	0.157	22.22	1.5
E8125□E LT	1/30	25	1 Ø115	60	60	0.69	1.75	0.172	24.30	0.50	0.049	6.94	90~1700	1.2	0.118	16.66	4
E8125□X LT	1/30	25	1 Ø220-240	50	60	0.32	1.85	0.181	25.69	0.55	0.054	7.64	90~1400	1.25	0.123	17.36	1.5

* 모델명중 화색은 UL규정을 따르는 Thermally protected type입니다.
 * 모델명중 진화색은 CE규정을 따르는 Thermally protected type입니다.
 * 해외인증제품은 모델명 뒤에 E□□□□□-CE or UL로 구분하여 출고되며 절연등급은 B종입니다.



GEARHEADS

Frame size 80mm sq. (3.15 in. sq.)

METAL TYPE & BALL BEARING TYPE

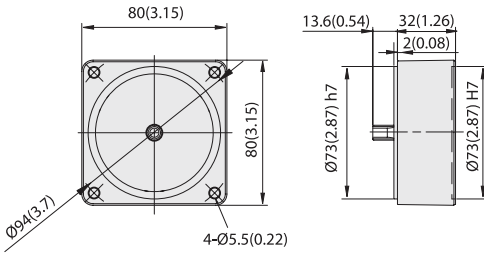
DIMENSIONS

중간감속기 (DECIMAL GEARHEAD)

GEARHEAD

Unit : mm(inch)

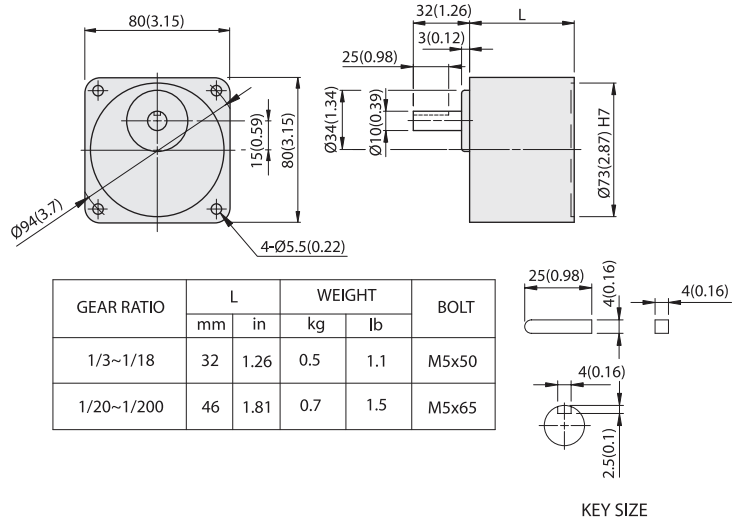
E8G10D



WEIGHT 0.4kg(0.88 lb)

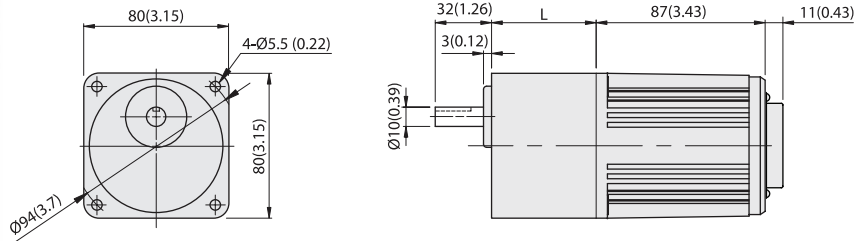


E8HK□ M(B)



GEAR RATIO	L		WEIGHT		BOLT
	mm	in	kg	lb	
1/3~1/18	32	1.26	0.5	1.1	M5x50
1/20~1/200	46	1.81	0.7	1.5	M5x65

E8HK□ M(B) + E8I25P□ LT



GEARHEAD의 허용 토크

MODEL	Speed(rpm)		500	300	200	120	100	60	50	30	20	15	10	6	5	3	2	1	
	Ratio	Speed	50Hz	60Hz	50Hz	60Hz	50Hz	60Hz	50Hz	60Hz	50Hz	60Hz	50Hz	60Hz	50Hz	60Hz	50Hz	60Hz	
E8HK□ M E8HK□ B E8G10D(DECIMAL)	High	kg-cm	3	5	7.5	12.5	15	25	30	50	75	100	150	250	300	500	750	1500	
			3.6	6	9	15	18	30	36	60	90	120	180	300	360	600	900	1800	
	Low	N-m	4.3	7.1	10.6	17.7	21.3	31.9	38.3	57.8	80	80	80	80	80	80	80	80	80
			1.3	2.2	3.3	5.6	6.7	10.0	12.0	18.2	27.2	36.3	54.5	80	80	80	80	80	80
	High	oz-in	0.42	0.69	1.04	1.74	2.08	3.13	3.76	5.66	7.84	7.84	7.84	7.84	7.84	7.84	7.84	7.84	
			0.13	0.22	0.33	0.55	0.65	0.98	1.18	1.78	2.67	3.56	5.34	7.84	7.84	7.84	7.84	7.84	
	Low		59	98	148	246	295	444	532	802	1111	1111	1111	1111	1111	1111	1111	1111	
			19	31	46	77	93	139	167	252	378	504	756	1111	1111	1111	1111	1111	

* Motor와 감속기가 직결된 상태의 허용토크입니다.
 * 감속기 모델명의 □는 감속비율을 표시합니다.
 * 실제 회전속도는 동기속도보다 2~15%정도 낮습니다.
 * ■색칠된 부분은 Motor의 출력축 회전방향과 반대일 경우를 의미합니다.

With Decimal Gearhead



SPEED CONTROL INDUCTION MOTORS

Frame size 90mm sq. (3.54 in. sq.)

40W (1/18.5 HP)

단상

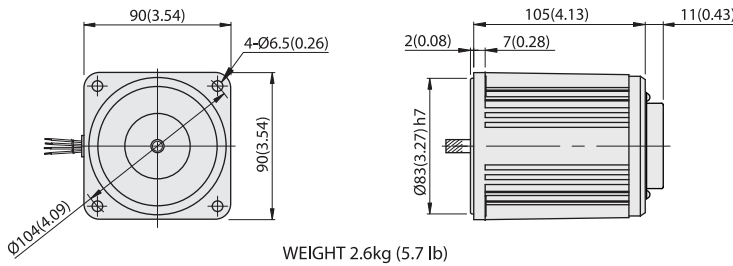
LEAD WIRE TYPE

DIMENSIONS

SPEED-TORQUE CURVE

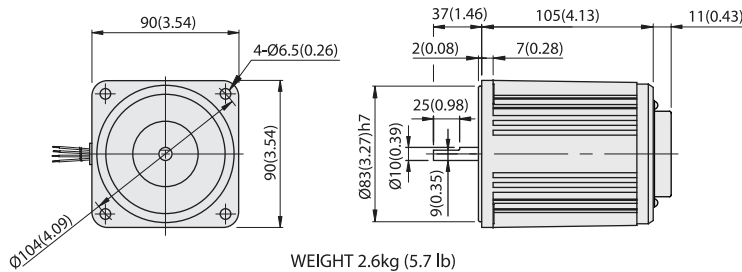
Unit : mm(inch)

E9I40P□LT



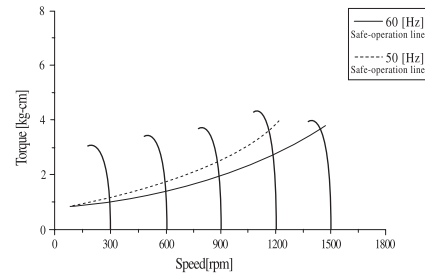
WEIGHT 2.6kg (5.7 lb)

E9I40D□LT



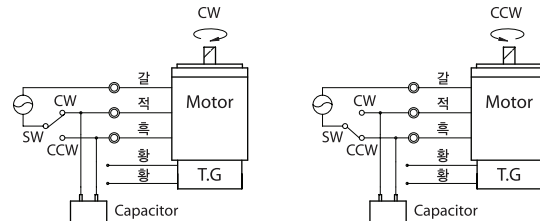
WEIGHT 2.6kg (5.7 lb)

Single phase E9I40□□LT



결선도

표준 및 T.내장 공통



모터의 회전방향은 출력축에서 보았을 때를 기준합니다.

SPECIFICATIONS

연속운전, 절연등급 A or E종, 4극

Model	Maximum Output		Voltage (V)	Frequency (Hz)	Input (W)	Max. Current (A)	Permissible Torque						Speed Range (rpm)	Starting Torque			Capacitor (µF)
	(HP)	(W)					1200(rpm)		90(rpm)		(kg-cm)	(N-m)		(oz-in)	(kg-cm)	(N-m)	
E9I40□C LT	1/18.5	40	1∅100	50	90	1.10	2.7	0.265	37.49	0.8	0.078	11.11	90~1400	2	0.196	27.77	10
				60	90	1.10	2.1	0.206	29.16	0.8	0.078	11.11	90~1700	2	0.196	27.77	
E9I40□D LT	1/18.5	40	1∅200	50	90	.052	2.7	0.265	37.49	0.8	0.078	11.11	90~1400	2.4	0.235	33.33	3
				60	90	.052	2.1	0.206	29.16	0.8	0.078	11.11	90~1700	2.4	0.235	33.33	
E9I40□B LT	1/18.5	40	1∅220	60	95	0.5	2.7	0.265	37.49	1	0.098	13.89	90~1700	2.4	0.235	33.33	2.5
E9I40□E LT	1/18.5	40	1∅115	60	90	1.10	2.5	0.245	34.72	0.8	0.078	11.11	90~1700	2	0.196	27.77	8
E9I40□X LT	1/18.5	40	1∅220~240	50	100	0.58	2.8	0.274	38.88	1	0.098	13.89	90~1400	2.7	0.265	37.49	2.5

* 모델명중 화색은 UL규정을 따르는 Thermally protected type입니다.
 * 모델명중 진화색은 CE규정을 따르는 Thermally protected type입니다.
 * 해외인증제품은 모델명 뒤에 E□□□□□-CE or UL로 구분하여 출고되며 절연등급은 B종입니다.



GEARHEADS

Frame size 90mm sq. (3.54 in. sq.)

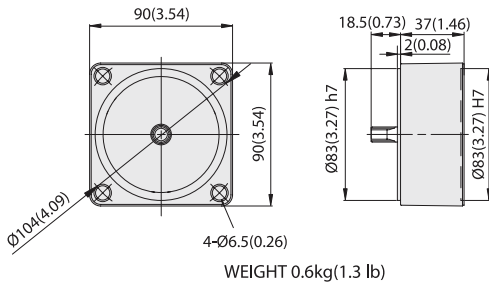
METAL TYPE & BALL BEARING TYPE

DIMENSIONS

Unit : mm(inch)

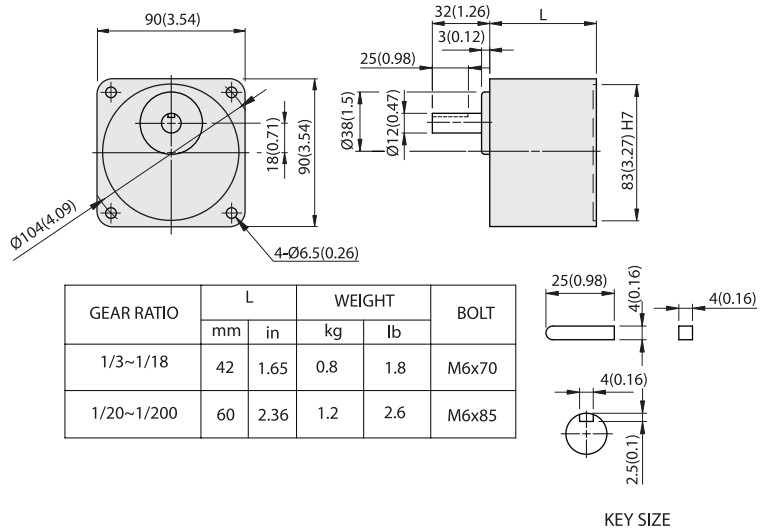
중간감속기 (DECIMAL GEARHEAD)

E9G10D



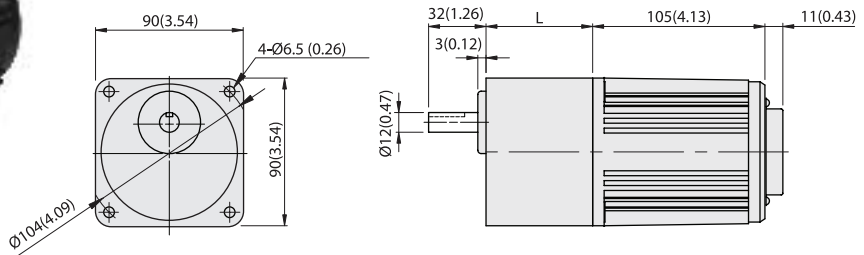
GEARHEAD

E9HK□M(B)



GEAR RATIO	L		WEIGHT		BOLT
	mm	in	kg	lb	
1/3~1/18	42	1.65	0.8	1.8	M6x70
1/20~1/200	60	2.36	1.2	2.6	M6x85

E9HK□M(B) + E9I40P□LT



GEARHEAD의 허용 토크

MODEL	Speed(rpm)		500	300	200	120	100	60	50	30	20	15	10	6	5	3	2	1	
	Ratio	Speed	50Hz	3	5	7.5	12.5	15	25	30	50	75	100	150	250	300	500	750	1500
E9HK□M E9HK□B E9G10D(DECIMAL)	High	kg-cm	60Hz	3.6	6	9	15	18	30	36	60	90	120	180	300	360	600	900	1800
			6.6	10.9	16.4	27.3	32.8	49.3	59.1	89.1	100	100	100	100	100	100	100	100	100
	Low	N-m	1.9	3.2	4.9	8.1	9.7	14.6	17.5	26.4	39.6	52.8	79.2	100	100	100	100	100	100
			0.64	1.07	1.61	2.68	3.21	4.83	5.79	8.73	9.80	9.80	9.80	9.80	9.80	9.80	9.80	9.80	9.80
	High	oz-in	91	152	228	380	456	684	821	1237	1389	1389	1389	1389	1389	1389	1389	1389	1389
			27	45	67	112	135	203	243	367	550	733	1100	1389	1389	1389	1389	1389	1389

* Motor와 감속기가 직결된 상태의 허용토크입니다.
 * 감속기 모델명의 □는 감속비율을 표시합니다.
 * 실제 회전속도는 동기속도보다 2~15%정도 낮습니다.
 * ■색칠된 부분은 Motor의 출력축 회전방향과 반대일 경우를 의미합니다.

With Decimal Gearhead



SPEED CONTROL INDUCTION MOTORS

Frame size 90mm sq. (3.54 in. sq.)

60W (1/12.5 HP)

단상

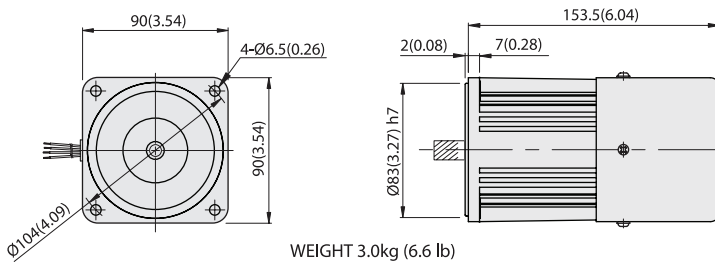
LEAD WIRE TYPE

DIMENSIONS

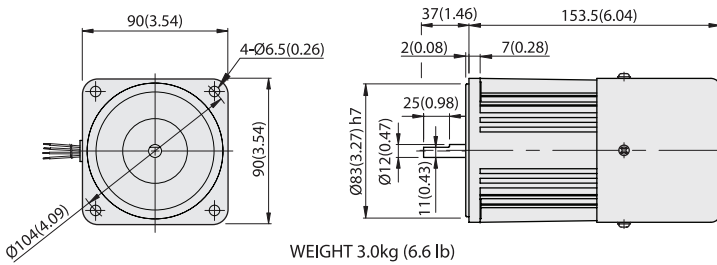
SPEED-TORQUE CURVE

Unit : mm(inch)

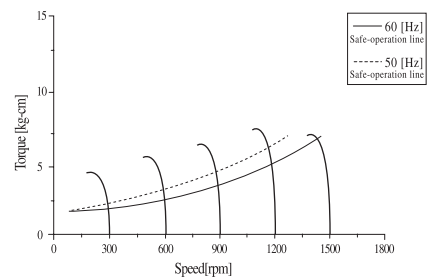
E9160P□HT



E9160D□HT

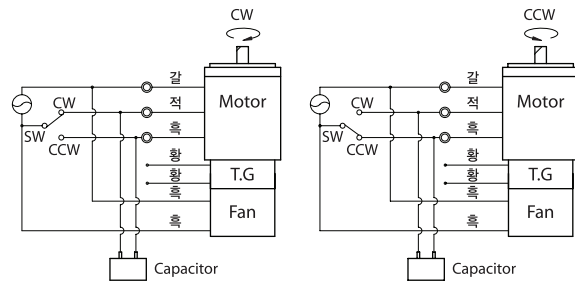


Single phase E9160□□HT



결선도

표준 및 T.내장 공통



모터의 회전방향은 출력축에서 보았을 때를 기준합니다.

SPECIFICATIONS

연속운전, 절연등급 A or E종, 4극

Model	Maximum Output		Voltage (V)	Frequency (Hz)	Input (W)	Max. Current (A)	Permissible Torque						Speed Range (rpm)	Starting Torque			Capacitor (µF)
	(HP)	(W)					1200(rpm)		90(rpm)		(kg-cm)	(N-m)		(oz-in)	(kg-cm)	(N-m)	
E9160□C HT	1/12.5	60	1 Ø100	50	150	1.65	5.5	0.539	76.38	1.8	0.176	25.00	90~1400	3	0.294	41.66	15
				60	150	1.60	5	0.490	69.43	1.8	0.176	25.00	90~1700	3	0.294	41.66	
E9160□D HT	1/12.5	60	1 Ø200	50	150	0.75	5.5	0.539	76.38	1.8	0.176	25.00	90~1400	3.9	0.382	54.16	4.5
				60	150	0.75	5	0.490	69.43	1.8	0.176	25.00	90~1700	3.9	0.382	54.16	
E9160□B HT	1/12.5	60	1 Ø220	60	160	0.9	5.5	0.539	76.38	2	0.196	27.77	90~1700	3.5	0.343	48.60	4
E9160□E HT	1/12.5	60	1 Ø115	60	150	1.58	5.5	0.539	76.38	1.8	0.176	25.00	90~1700	3	0.294	41.66	12
E9160□X HT	1/12.5	60	1 Ø220~240	50	160	0.83	5.8	0.568	80.54	1.8	0.176	25.00	90~1400	4.2	0.412	58.33	4

* 모델명중 화색은 UL규정을 따르는 Thermally protected type입니다.
 * 모델명중 진화색은 CE규정을 따르는 Thermally protected type입니다.
 * 해외인증제품은 모델명 뒤에 E□□□□□-CE or UL로 구분하여 출고되며 절연등급은 B종입니다.



GEARHEADS(강력형)

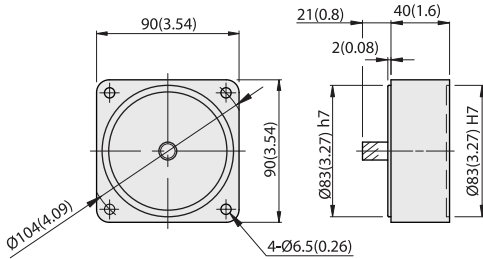
Frame size 90mm sq. (3.54 in. sq.)

BALL BEARING TYPE

DIMENSIONS

중간감속기 (DECIMAL GEARHEAD)

E9V10D



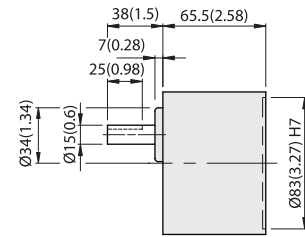
WEIGHT 0.6kg (1.3 lb)



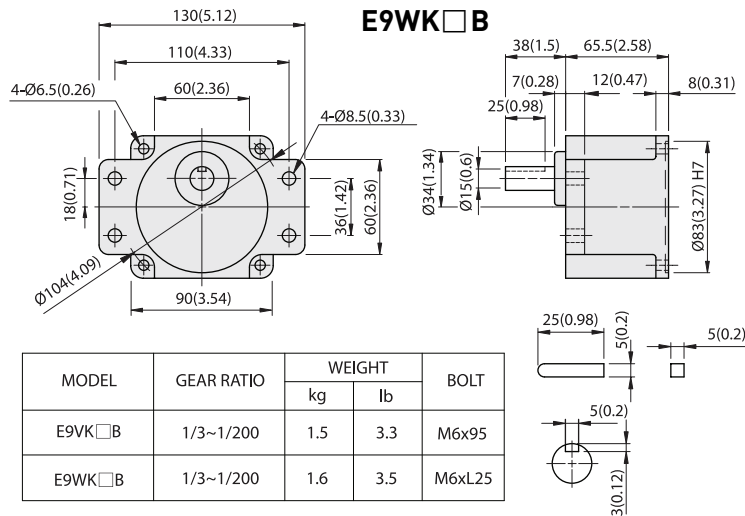
GEARHEAD

Unit : mm(inch)

E9VK□B



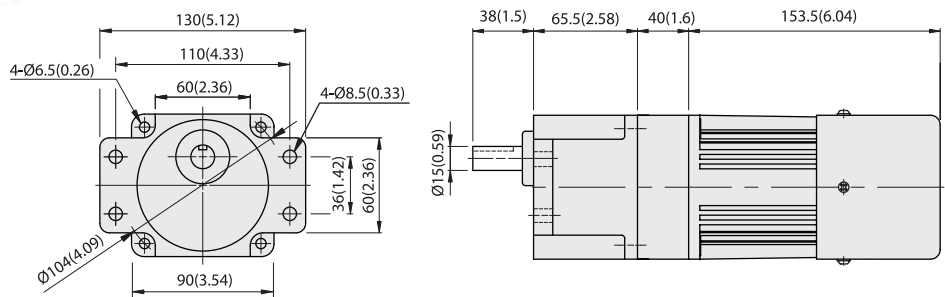
E9WK□B



MODEL	GEAR RATIO	WEIGHT		BOLT
		kg	lb	
E9VK□B	1/3~1/200	1.5	3.3	M6x95
E9WK□B	1/3~1/200	1.6	3.5	M6xL25

KEY SIZE

E9WK□B + E9V10D + E9160P□HT



GEARHEAD의 허용 토크

MODEL	Speed(rpm)		500	300	200	120	100	60	50	30	20	15	10	6	5	3	2	1		
	Ratio	Speed	50Hz	3	5	7.5	12.5	15	25	30	50	75	100	150	250	300	500	750	1500	
E9VK□B E9WK□B E9V10D(DECIMAL)	High	kg-cm	60Hz	3.6	6	9	15	18	30	36	60	90	120	180	300	360	600	900	1800	
			High	13.4	22.3	33.4	50.2	60.2	90.8	108.9	181.5	200	200	200	200	200	200	200	200	200
	Low	N-m	High	1.31	2.18	3.27	4.92	5.90	8.89	10.67	17.79	19.60	17.79	19.60	19.60	19.60	19.60	19.60	19.60	19.60
			Low	0.43	0.71	1.07	1.61	1.93	2.91	3.49	5.82	7.81	10.41	15.61	19.60	19.60	19.60	19.60	19.60	19.60
	High	oz-in	High	186	309	464	697	836	1260	1512	2520	2777	2777	2777	2777	2777	2777	2777	2777	2777
			Low	61	101	152	228	274	412	495	825	1106	1475	2212	2777	2777	2777	2777	2777	2777

* Motor와 감속기가 직결된 상태의 허용토크입니다.
 * 감속기 모델명의 □는 감속비율을 표시합니다.
 * 실제 회전속도는 동기속도보다 2~15%정도 낮습니다.
 * ■색칠된 부분은 Motor의 출력축 회전방향과 반대일 경우를 의미합니다.

With Decimal Gearhead



GEARHEADS(초강력형)

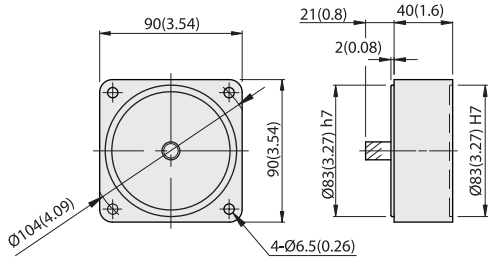
Frame size 90mm sq. (3.54 in. sq.)

BALL BEARING TYPE

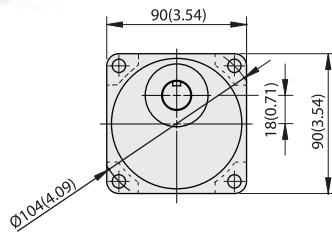
DIMENSIONS

중간감속기 (DECIMAL GEARHEAD)

E9V10D



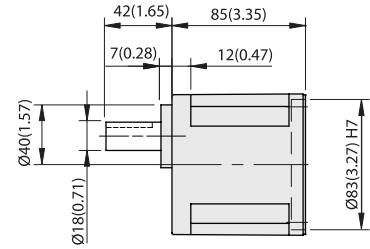
WEIGHT 0.6kg (1.3 lb)



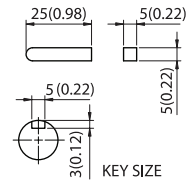
GEARHEAD

Unit : mm(inch)

E9UK□B

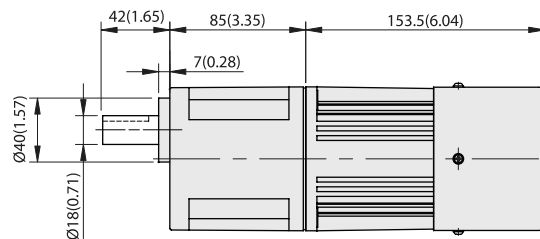


MODEL	GEAR RATIO	WEIGHT		BOLT
		kg	lb	
E9UK□B	1/3~1/200	1.95	4.3	M6xL25



KEY SIZE

E9UK□B + E9I60P□HT



GEARHEAD의 허용 토크

MODEL	Speed(rpm)		500	300	200	120	100	60	50	30	20	15	10	6	5	3	2	1
	Ratio	Speed	50Hz	3	5	7.5	12.5	15	25	30	50	75	100	150	250	300	500	750
E9UK□B E9V10D(DECIMAL)	kg-cm	High	3.6	6	9	15	18	30	36	60	90	120	180	300	360	600	900	1800
		Low	13.4	22.3	33.4	50.2	60.2	90.8	108.9	181.5	243.4	300	300	300	300	300	300	300
	N-m	High	1.31	2.18	3.27	4.92	5.90	8.89	10.67	17.79	23.85	29.40	29.40	29.40	29.40	29.40	29.40	29.40
		Low	0.43	0.71	1.07	1.61	1.93	2.91	3.49	5.82	7.81	10.41	15.61	23.37	28.05	29.40	29.40	29.40
	oz-in	High	186	309	464	697	836	1260	1512	2520	3380	4166	4166	4166	4166	4166	4166	4166
		Low	61	101	152	228	274	412	495	825	1106	1475	2212	3312	3974	4166	4166	4166

* Motor와 감속기가 직결된 상태의 허용토크입니다.
 * 감속기 모델명의 □는 감속비율을 표시합니다.
 * 실제 회전속도는 동기속도보다 2~15%정도 낮습니다.
 * ■ 색칠된 부분은 Motor의 출력축 회전방향과 반대일 경우를 의미합니다.

With Decimal Gearhead



SPEED CONTROL INDUCTION MOTORS

Frame size 90mm sq. (3.54 in. sq.)

90W (1/8 HP)

단상

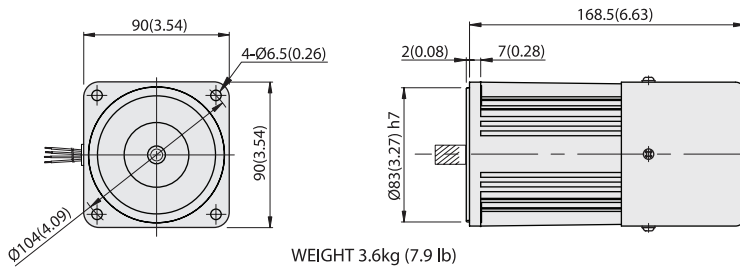
LEAD WIRE TYPE

DIMENSIONS

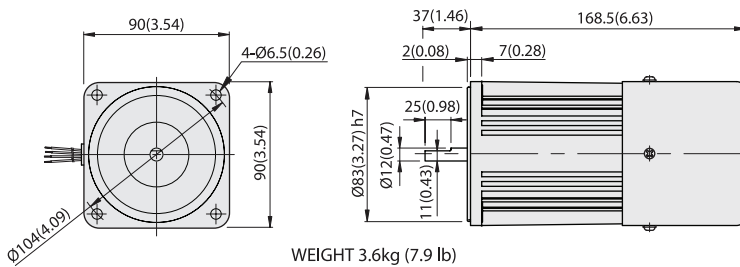
SPEED-TORQUE CURVE

Unit : mm(inch)

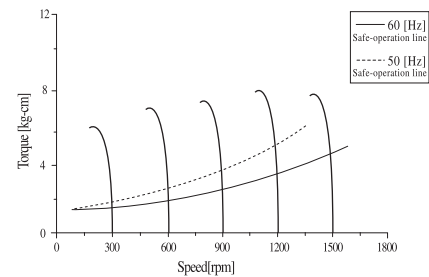
E9190P□ HT



E9190D□ HT

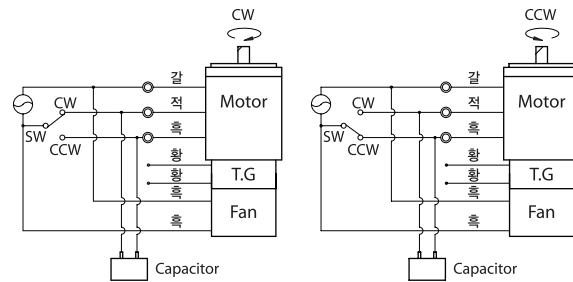


Single phase E9190□□ HT



결선도

표준 및 T.P.내장 공통



모터의 회전방향은 출력축에서 보았을 때를 기준합니다.



SPECIFICATIONS

연속운전, 절연등급 A or E종, 4극

Model	Maximum Output		Voltage (V)	Frequency (Hz)	Input (W)	Max. Current (A)	Permissible Torque						Speed Range (rpm)	Starting Torque			Capacitor (μF)
	(HP)	(W)					1200(rpm)			90(rpm)				(kg-cm)	(N-m)	(oz-in)	
E9190□C HT	1/8	90	1∅100	50	200	2.5	6	0.588	83.32	2.3	0.225	31.94	90~1400	4.5	0.441	62.49	25
							5.5	0.539	76.38	2.3	0.225	31.94	90~1700	4.5	0.441	62.49	
E9190□D HT	1/8	90	1∅200	50	200	1.1	6	0.588	83.32	2.3	0.225	31.94	90~1400	5.4	0.529	74.99	7
							5.5	0.539	76.38	2.3	0.225	31.94	90~1700	5.4	0.529	74.99	
E9190□B HT	1/8	90	1∅220	60	210	1.3	6	0.588	83.32	2.5	0.245	34.72	90~1700	5.1	0.500	70.82	6
E9190□E HT	1/8	90	1∅115	60	210	2.4	6	0.588	83.32	2.2	0.216	30.55	90~1700	4.5	0.441	62.49	20
E9190□X HT	1/8	90	1∅220~240	50	210	1.2	7.1	0.696	98.60	2.3	0.225	31.94	90~1400	5.1	0.500	70.82	6

* 모델명중 회색은 UL규정을 따르는 Thermally protected type입니다.
 * 모델명중 진회색은 CE규정을 따르는 Thermally protected type입니다.
 * 해외인증제품은 모델명 뒤에 E□□□□□-CE or UL로 구분하여 출고되며 절연등급은 B종입니다.



GEARHEADS(강력형)

Frame size 90mm sq. (3.54 in. sq.)

BALL BEARING TYPE

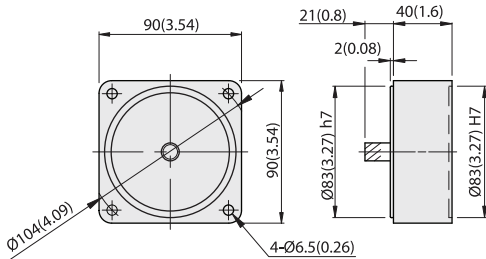
DIMENSIONS

중간감속기 (DECIMAL GEARHEAD)

GEARHEAD

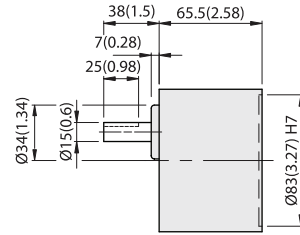
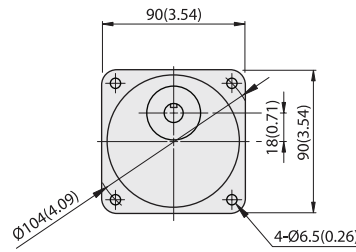
Unit : mm(inch)

E9V10D

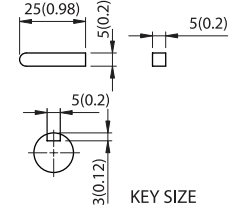
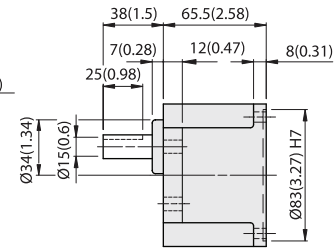
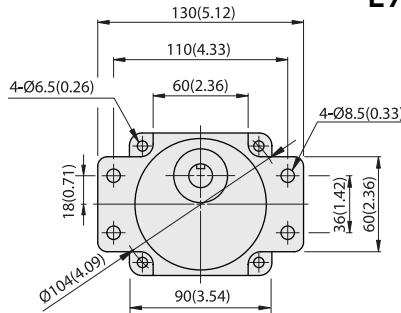


WEIGHT 0.6kg (1.3 lb)

E9VK□B



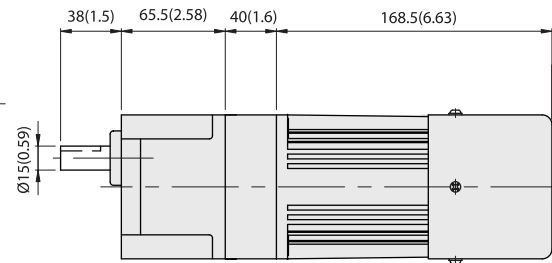
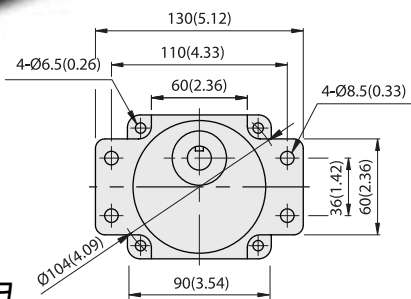
E9WK□B



KEY SIZE

MODEL	GEAR RATIO	WEIGHT		BOLT
		kg	lb	
E9VK□B	1/3~1/200	1.5	3.3	M6x95
E9WK□B	1/3~1/200	1.6	3.5	M6xL25

E9WK□B + E9V10D + E9190P□HT



GEARHEAD의 허용 토크

MODEL	Speed(rpm)		500	300	200	120	100	60	50	30	20	15	10	6	5	3	2	1	
	Ratio	Speed	50Hz	3	5	7.5	12.5	15	25	30	50	75	100	150	250	300	500	750	1500
		Speed	60Hz	3.6	6	9	15	18	30	36	60	90	120	180	300	360	600	900	1800
E9VK□B	N-m	High	kg-cm	14.6	24.3	36.5	54.8	65.7	99.0	118.8	198.0	200	200	200	200	200	200	200	
		Low	kg-cm	5.6	9.3	14.0	21.0	25.2	38.0	45.5	75.9	101.8	135.7	200	200	200	200	200	200
E9WK□B	N-m	High	kg-cm	1.43	2.38	3.57	5.37	6.44	9.70	11.64	19.40	19.60	19.60	19.60	19.60	19.60	19.60	19.60	
		Low	kg-cm	0.55	0.91	1.37	2.06	2.47	3.72	4.46	7.44	9.97	13.30	19.60	19.60	19.60	19.60	19.60	
E9V10D(DECIMAL)	oz-in	High	oz-in	202	337	506	760	912	1375	1650	2750	2777	2777	2777	2777	2777	2777	2777	
		Low	oz-in	78	129	194	291	350	527	632	1054	1413	1884	2777	2777	2777	2777	2777	

* Motor와 감속기가 직결된 상태의 허용토크입니다.
 * 감속기 모델명의 □는 감속비율을 표시합니다.
 * 실제 회전속도는 동기속도보다 2~15%정도 낮습니다.
 * ■ 색칠된 부분은 Motor의 출력축 회전방향과 반대일 경우를 의미합니다.

With Decimal Gearhead



GEARHEADS(초강력형)

Frame size 90mm sq. (3.54 in. sq.)

BALL BEARING TYPE

DIMENSIONS

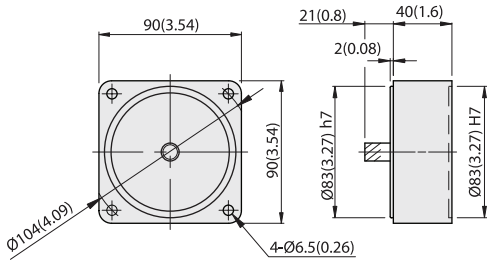
중간감속기 (DECIMAL GEARHEAD)

GEARHEAD

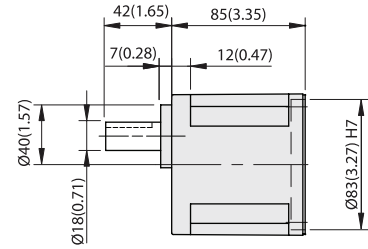
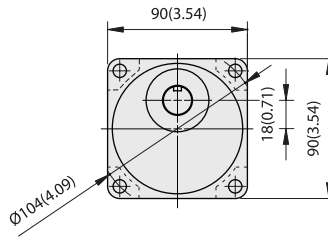
Unit : mm(inch)

E9V10D

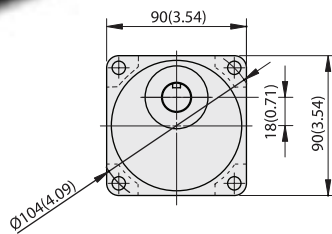
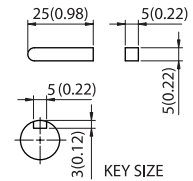
E9UK□B



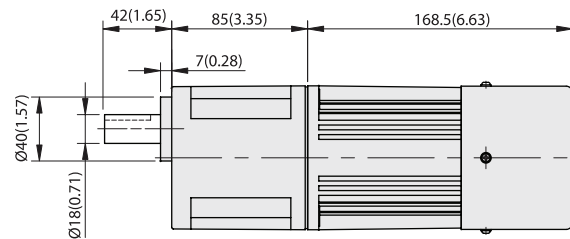
WEIGHT 0.6kg (1.3 lb)



MODEL	GEAR RATIO	WEIGHT		BOLT
		kg	lb	
E9UK□B	1/3~1/200	1.95	4.3	M6xL25



E9UK□B + E9I90P□HT



GEARHEAD의 허용 토크

MODEL	Speed(rpm)		500	300	200	120	100	60	50	30	20	15	10	6	5	3	2	1	
	Ratio	Speed	50Hz	3	5	7.5	12.5	15	25	30	50	75	100	150	250	300	500	750	1500
E9UK□B E9V10D(DECIMAL)	High	kg-cm	14.6	24.3	36.5	54.8	65.7	99.0	118.8	198.0	265.5	300	300	300	300	300	300	300	300
		Low	5.6	9.3	14.0	21.0	25.2	38.0	45.5	75.9	101.8	135.7	203.6	300	300	300	300	300	300
	High	N-m	1.43	2.38	3.57	5.37	6.44	9.70	11.64	19.40	26.02	29.40	29.40	29.40	29.40	29.40	29.40	29.40	29.40
		Low	0.55	0.91	1.37	2.06	2.47	3.72	4.46	7.44	9.97	13.30	19.95	29.40	29.40	29.40	29.40	29.40	29.40
	High	oz-in	202	337	506	760	912	1375	1650	2750	3687	4166	4166	4166	4166	4166	4166	4166	4166
		Low	78	129	194	291	350	527	632	1054	1413	1884	2827	4166	4166	4166	4166	4166	4166

- * Motor와 감속기가 직결된 상태의 허용토크입니다.
- * 감속기 모델명의 □는 감속비율을 표시합니다.
- * 실제 회전속도는 동기속도보다 2~15%정도 낮습니다.
- * ■색칠된 부분은 Motor의 출력축 회전방향과 반대일 경우를 의미합니다.

With Decimal Gearhead



SPEED CONTROL INDUCTION MOTORS

Frame size 90mm sq. (3.54 in. sq.)

120W (1/6 HP)

단상

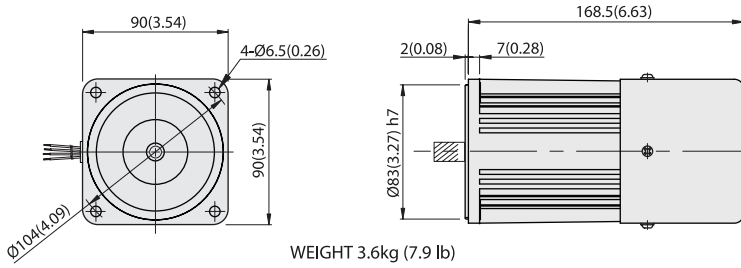
LEAD WIRE TYPE

DIMENSIONS

SPEED-TORQUE CURVE

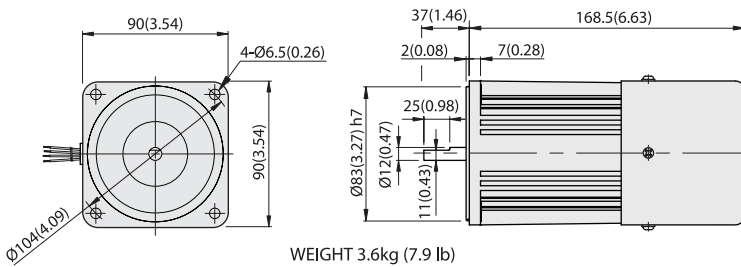
Unit : mm(inch)

E9I120P□HT



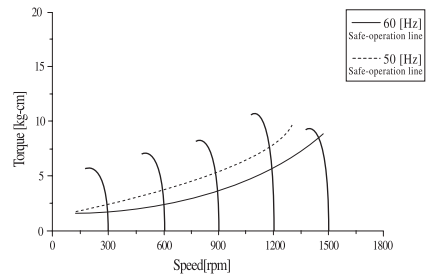
WEIGHT 3.6kg (7.9 lb)

E9I120D□HT



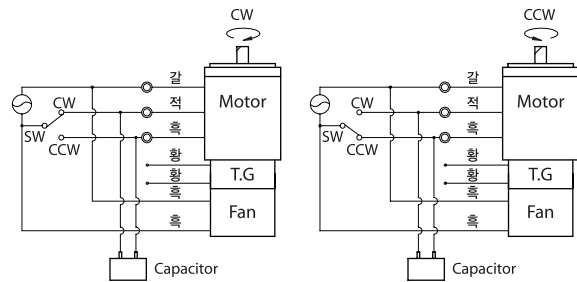
WEIGHT 3.6kg (7.9 lb)

Single phase E9I120□□HT



결선도

표준 및 T.내장 공통



모터의 회전방향은 출력축에서 보았을 때를 기준합니다.



SPECIFICATIONS

연속운전, 절연등급 A or E종, 4극

Model	Maximum Output		Voltage (V)	Frequency (Hz)	Input (W)	Max. Current (A)	Permissible Torque						Speed Range (rpm)	Starting Torque			Capacitor (µF)
	(HP)	(W)					1200(rpm)	90(rpm)	1200(rpm)	90(rpm)	1200(rpm)	90(rpm)		(kg-cm)	(N-m)	(oz-in)	
E9I120□C HT	1/6	120	1 Ø100	50	260	3.0	8	0.784	111.10	4	0.392	55.55	90~1400	6.1	0.598	84.71	30
				60	260	3.0	6.5	0.637	90.27	4	0.392	55.55	90~1700	6.1	0.598	84.71	
E9I120□D HT	1/6	120	1 Ø200	50	260	1.24	8	0.784	111.10	4	0.392	55.55	90~1400	6.1	0.598	84.71	8
				60	260	1.44	6.5	0.637	90.27	4	0.392	55.55	90~1700	6.1	0.598	84.71	
E9I120□B HT	1/6	120	1 Ø220	60	270	1.6	6.5	0.637	90.27	4	0.392	55.55	90~1700	6.8	0.666	94.43	7
E9I120□E HT	1/6	120	1 Ø115	60	270	3.0	6.5	0.367	90.27	4	0.392	55.55	90~1700	5.9	0.578	81.93	25
E9I120□X HT	1/6	120	1 Ø220~240	50	270	1.3	8	0.784	111.10	4	0.392	55.55	90~1400	6.8	0.666	94.43	7

* 모델명중 화색은 UL규정을 따르는 Thermally protected type입니다.
 * 모델명중 진화색은 CE규정을 따르는 Thermally protected type입니다.
 * 해외인증제품은 모델명 뒤에 E□□□□□-CE or UL로 구분하여 출고되며 절연등급은 B종입니다.



GEARHEADS(강력형)

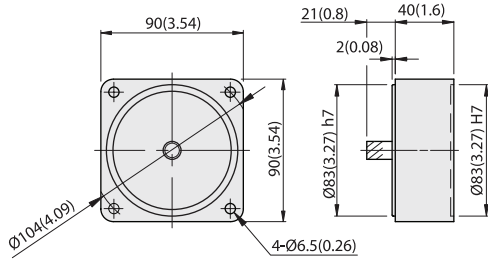
Frame size 90mm sq. (3.54 in. sq.)

BALL BEARING TYPE

DIMENSIONS

중간감속기 (DECIMAL GEARHEAD)

E9V10D

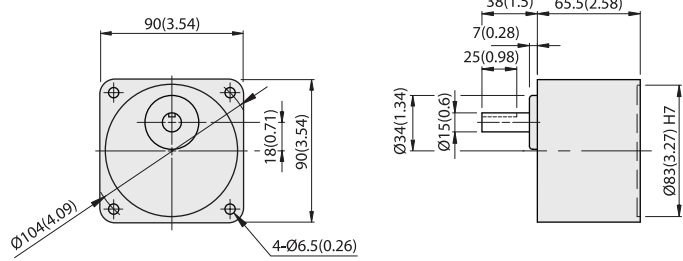


WEIGHT 0.6kg (1.3 lb)

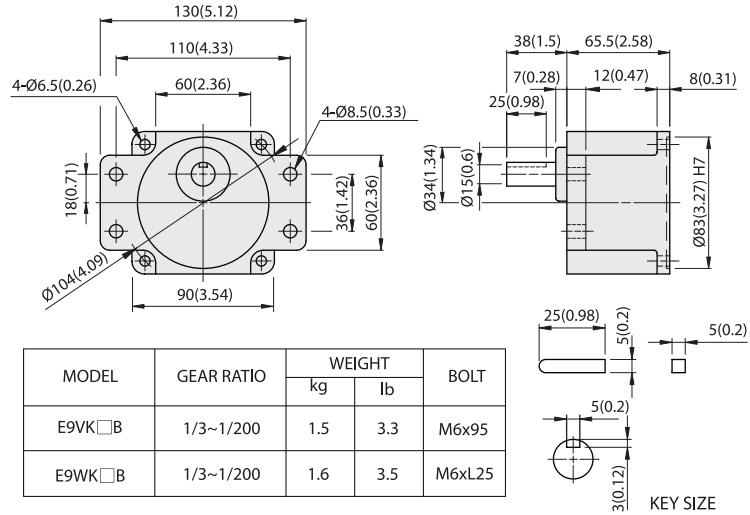
GEARHEAD

Unit : mm(inch)

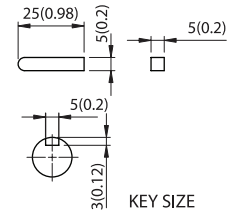
E9VK□B



E9WK□B



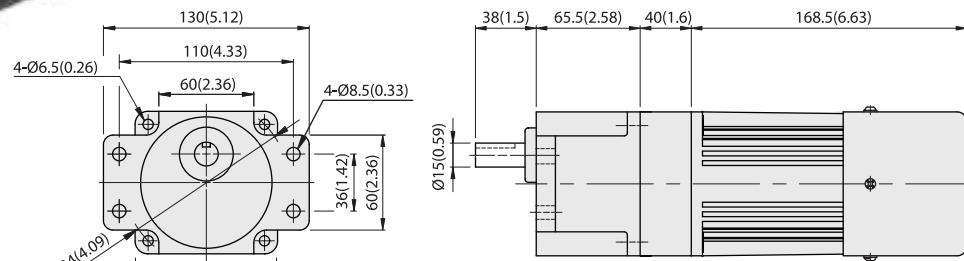
MODEL	GEAR RATIO	WEIGHT		BOLT
		kg	lb	
E9VK□B	1/3~1/200	1.5	3.3	M6x95
E9WK□B	1/3~1/200	1.6	3.5	M6xL25



KEY SIZE



E9WK□B + E9V10D + E9I120P□HT



GEARHEAD의 허용 토크

MODEL	Speed(rpm)		500	300	200	120	100	60	50	30	20	15	10	6	5	3	2	1	
	Ratio	Speed	50Hz	3	5	7.5	12.5	15	25	30	50	75	100	150	250	300	500	750	1500
E9VK□B	High	kg-cm	60Hz	3.6	6	9	15	18	30	36	60	90	120	180	300	360	600	900	1800
			Low	19.4	32.4	48.6	73.0	87.6	132.0	158.4	200	200	200	200	200	200	200	200	200
E9WK□B	High	N-m	50Hz	0.95	1.59	2.38	3.58	4.29	6.47	7.76	12.94	17.35	19.60	19.60	19.60	19.60	19.60	19.60	19.60
			60Hz	1.35	2.25	3.37	5.07	6.08	9.17	11.00	18.33	24.58	27.77	27.77	27.77	27.77	27.77	27.77	27.77
E9V10D(DECIMAL)	High	oz-in	50Hz	270	450	675	1014	1216	1833	2200	2777	2777	2777	2777	2777	2777	2777	2777	2777
			60Hz	380	630	945	1420	1704	2560	3100	3900	4900	4900	4900	4900	4900	4900	4900	4900

* Motor와 감속기가 직결된 상태의 허용토크입니다.
 * 감속기 모델명의 □는 감속비율을 표시합니다.
 * 실제 회전속도는 동기속도보다 2~15%정도 낮습니다.
 * ■색칠된 부분은 Motor의 출력축 회전방향과 반대일 경우를 의미합니다.

With Decimal Gearhead



GEARHEADS(초강력형)

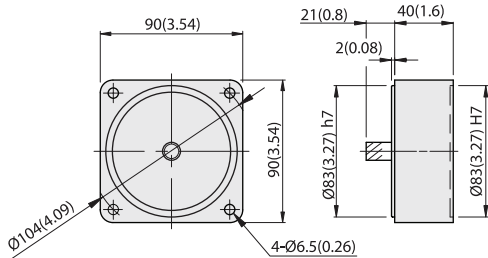
Frame size 90mm sq. (3.54 in. sq.)

BALL BEARING TYPE

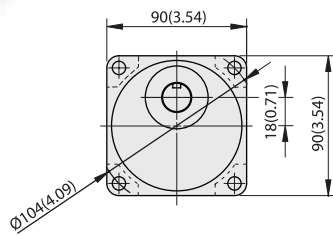
DIMENSIONS

중간감속기 (DECIMAL GEARHEAD)

E9V10D



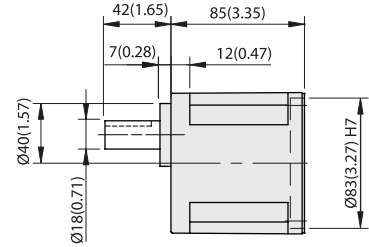
WEIGHT 0.6kg (1.3 lb)



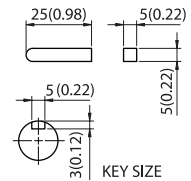
GEARHEAD

Unit : mm(inch)

E9UK□B

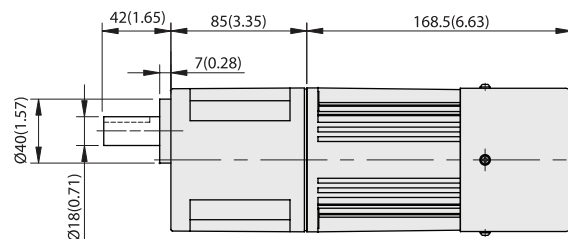


MODEL	GEAR RATIO	WEIGHT		BOLT
		kg	lb	
E9UK□B	1/3~1/200	1.95	4.3	M6xL25



KEY SIZE

E9UK□B + E91120P□HT



GEARHEAD의 허용 토크

MODEL	Speed(rpm)		500	300	200	120	100	60	50	30	20	15	10	6	5	3	2	1		
	Ratio	Speed	50Hz	3	5	7.5	12.5	15	25	30	50	75	100	150	250	300	500	750	1500	
E9UK□B E9V10D(DECIMAL)	High	kg-cm	60Hz	3.6	6	9	15	18	30	36	60	90	120	180	300	360	600	900	1800	
			High	19.4	32.4	48.6	73.0	87.6	132.0	158.4	264.0	300	300	300	300	300	300	300	300	300
	Low	N-m	High	9.7	16.2	24.3	36.5	43.8	66.0	79.2	132.0	177.0	236.0	300	300	300	300	300	300	300
			Low	1.91	3.18	4.76	7.15	8.58	12.94	15.52	25.87	29.40	29.40	29.40	29.40	29.40	29.40	29.40	29.40	29.40
	High	oz-in	High	270	450	675	1014	1216	1833	2200	3666	4166	4166	4166	4166	4166	4166	4166	4166	4166
			Low	135	225	337	507	608	917	1100	1833	2458	3277	4166	4166	4166	4166	4166	4166	4166

* Motor와 감속기가 직결된 상태의 허용토크입니다.
 * 감속기 모델명의 □는 감속비율을 표시합니다.
 * 실제 회전속도는 동기속도보다 2~15%정도 낮습니다.
 * ■ 색칠된 부분은 Motor의 출력축 회전방향과 반대일 경우를 의미합니다.

With Decimal Gearhead



SPEED CONTROL INDUCTION MOTORS

180W (1/4 HP)

Frame size 90mm sq. (3.54 in. sq.)

단상

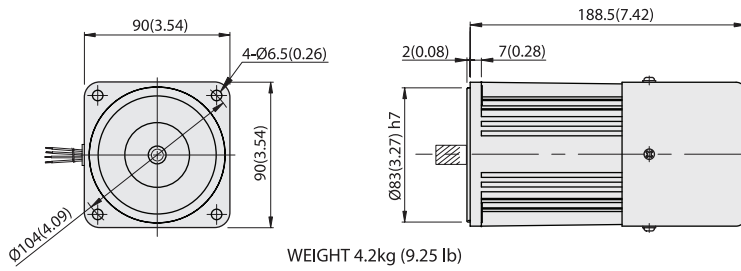
LEAD WIRE TYPE

DIMENSIONS

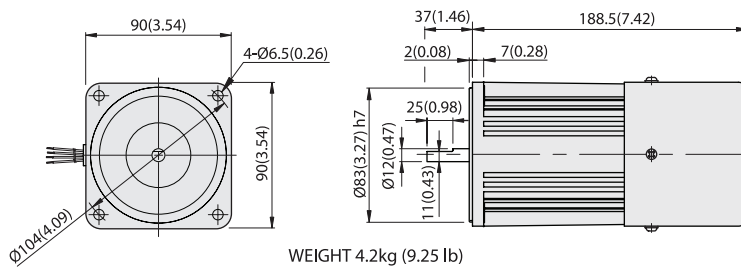
SPEED-TORQUE CURVE

Unit : mm(inch)

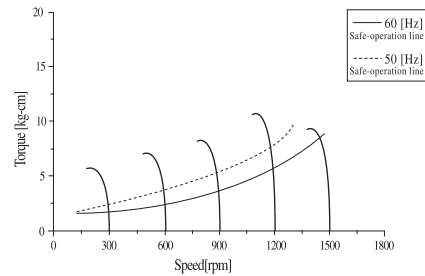
E9I180P□HT



E9I180D□HT

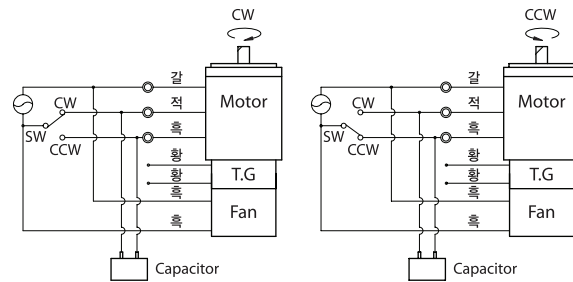


Single phase E9I180□□HT



결선도

표준 및 T.P내장 공통



모터의 회전방향은 출력축에서 보았을 때를 기준합니다.



SPECIFICATIONS

연속운전, 절연등급 A or E종, 4극

Model	Maximum Output		Voltage (V)	Frequency (Hz)	Input (W)	Max. Current (A)	Permissible Torque						Speed Range (rpm)	Starting Torque			Capacitor (μF)
	(HP)	(W)					1200(rpm)			90(rpm)				(kg-cm)	(N-m)	(oz-in)	
E9I180□B HT	1/4	180	1 Ø220	60	350	1.9	9.26	0.908	128.6	4.5	0.441	62.49	90~1700	6.2	0.608	86.1	7
E9I180□X HT	1/4	180	1 Ø220~240	50	350	1.8	11.12	1.09	154.43	5.3	0.520	73.60	90~1400	6.2	0.608	86.1	7

* 모델명중 회색은 UL규정을 따르는 Thermally protected type입니다.
 * 모델명중 진회색은 CE규정을 따르는 Thermally protected type입니다.
 * 해외인증제품은 모델명 뒤에 E□□□□□-CE or UL로 구분하여 출고되며 절연등급은 B종입니다.



GEARHEADS(초강력형)

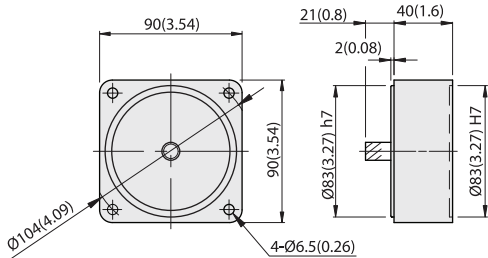
Frame size 90mm sq. (3.54 in. sq.)

BALL BEARING TYPE

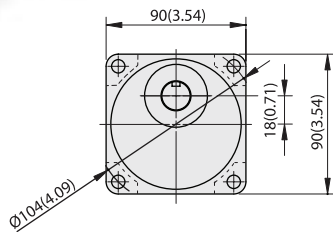
DIMENSIONS

중간감속기 (DECIMAL GEARHEAD)

E9V10D



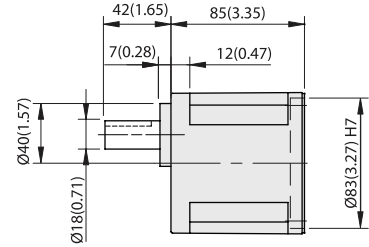
WEIGHT 0.6kg (1.3 lb)



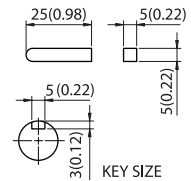
GEARHEAD

Unit : mm(inch)

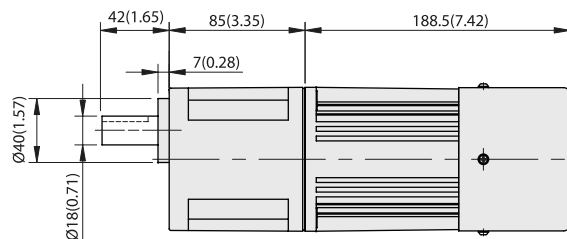
E9UK□B



MODEL	GEAR RATIO	WEIGHT		BOLT
		kg	lb	
E9UK□B	1/3~1/200	1.95	4.3	M6xL25



E9UK□B + E91180P□HT



GEARHEAD의 허용 토크

MODEL	Speed(rpm)		500	300	200	120	100	60	50	30	20	15	10	6	5	3	2	1	
	Ratio	Speed	50Hz	3	5	7.5	12.5	15	25	30	50	75	100	150	250	300	500	750	1500
E9UK□B E9V10D(DECIMAL)	High	kg-cm	27.02	45.04	67.55	101.33	121.60	182.40	218.87	300	300	300	300	300	300	300	300	300	300
		Low	12.88	21.47	32.20	48.30	57.96	86.93	104.32	173.87	234.71	300	300	300	300	300	300	300	300
	High	N-m	2.65	4.417	6.625	9.937	11.925	17.887	21.464	29.420	29.420	29.420	29.420	29.420	29.420	29.420	29.420	29.420	29.420
		Low	1.263	2.105	3.158	4.736	5.684	8.525	10.230	17.051	23.018	29.420	29.420	29.420	29.420	29.420	29.420	29.420	29.420
	High	oz-in	375.2	375.2	375.2	375.2	375.2	375.2	375.2	375.2	375.2	375.2	375.2	375.2	375.2	375.2	375.2	375.2	375.2
		Low	178.9	298.1	447.1	670.7	804.8	1207.3	1448.7	2414.5	3259.6	4166.2	4166.2	4166.2	4166.2	4166.2	4166.2	4166.2	4166.2

* Motor와 감속기가 직결된 상태의 허용토크입니다.
 * 감속기 모델명의 □는 감속비율을 표시합니다.
 * 실제 회전속도는 동기속도보다 2~15%정도 낮습니다.
 * ■ 색칠된 부분은 Motor의 출력축 회전방향과 반대일 경우를 의미합니다.

With Decimal Gearhead