

THIS DOCUMENT CONTAINS PROPRIETARY DATA OF POLARIS INDUSTRIAL ENTERPRISES, INC. NO DISCLOSURE, REPRODUCTION, OR USE OF ANY PART THERE OF MAY BE MADE EXCEPT BY WRITTEN PERMISSION.

REV.	BY	DATE	APPRVL.	REV. NOTE:	P/N	LCP12
M	BT	03/27/00		ADDED NOTE:		

SPECIFICATIONS

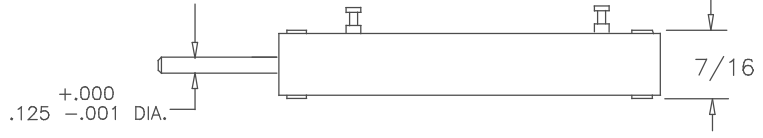
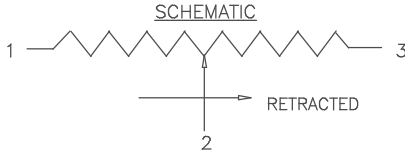
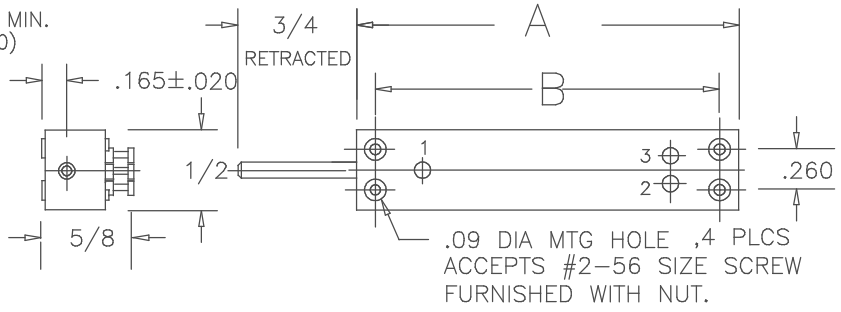
- RESOLUTION _____ INFINITE
- OUTPUT SMOOTHNESS _____ LESS THAN 0.1% INPUT VOLTAGE
- CONTACT RESIST. VARIATION _____ LESS THAN 2%
- DIELECTRIC STRENGTH _____ 500 VAC MIN.
- INSULATION RESISTANCE _____ 1000 MEGOHMS AT 500 VDC MIN.
- FRICTION _____ 1.8 oz. (3.6 oz FOR LCP12-100)
- STOP STRENGTH _____ 20 N
- RESISTANCE TEMPCO _____ ±400 PPM/°C
- WEIGHT _____ 10 TO 35 GRAMS
- LIFE EXPECTANCY _____ 20 MILLION STROKES

MATERIALS

- BODY _____ ALUMINUM(BLACK ANODIZE)
- LID _____ HIGH TEMP. PLASTIC
- SHAFT _____ STAINLESS STEEL
- TERMINALS _____ BRASS GOLD PLATED
- RESISTANCE ELEMENT _____ CONDUCTIVE PLASTIC

OPTIONS AVAILABLE

- SPECIAL ENDED SHAFTS
- SPECIAL RESISTANCE VALUES
- SPECIAL LINEARITY
- NON STANDARD STROKES
- SPRING RETURNS



MODEL NO'S.

SHAFT STYLES

- LCP12P-(STROKE)-(RES.) (P) PLAIN
 - LCP12A - " " (A) #4-40 THREAD
 - LCP12B - " " (B) #5-40 THREAD
 - LCP12C - " " (C) CHAMFERED 0.030"DIA. X 45°
 - LCP12S - " " (S) SPRING RETURN
- LCP12S-76 OR -100 (RES) RETRACTED LENGTH OF SHAFT TO BE 1 1/4" FOR 3" & 4" STROKE SPRING RETURN.

NOTE: FOR SPRING RETURN WITH THREAD, SEE DWG. LCP12ST

MODEL NO.	LCP12-12	LCP12-25	LCP12-50	LCP12-76	LCP12-100
STD.RESIS.VALUES	500,1K,2K 5K,10K	500,1K,2K 5K,10K	500,1K,2K 5K,10K,20K	1K,2K,5K 10K,20K	1K,2K,5K 10K,20K
RESISTANCE TOL.	±20%	±20%	±20%	±20%	±20%
LINEARITY (IND.)	±1.5%	±1.0%	±0.7%	±0.5%	±0.5%
POWER RATING	0.2 WATT	0.4 WATT	0.7 WATT	1.2 WATT	1.2 WATT
STROKE MECH ±.1-.0	1/2"	1"	2"	3"	4"
STROKE ELECT ±.02					
'A' DIM ±0.04	1.50	2.00	3.00	4.00	5.00
'B' DIM ±0.02	1.26	1.77	2.75	3.76	4.76

TOLERANCES
 XX = +/- .010" FRACT. = +/- 1/64"
 XXX = +/- .005" ANGLES = +/- 1/2"
 ALL SPECIFICATIONS SUBJECT TO CHANGE WITHOUT NOTICE.

SCALE	DATE: 3-29-86
NONE	BY
CODE	APPRV'D BT
IDENT: 19477	



TITLE
 LINEAR MOTION POTENTIOMETER

PART NO.
 LCP12