

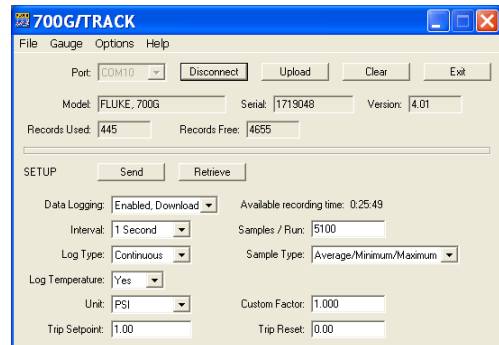
Fluke 700G Series Precision Pressure Test Gauges

Technical Data



Features

- Precision pressure measurement from ± 10 inH₂O/20 mbar to 10,000 psi/690 bar
- Absolute pressure measurement ranges 15, 30, 100, 300 psia
- Accuracy to 0.05 % of full scale
- Reference class gauge accuracies to 0.04 % of reading
- Easy to use, rugged construction for reliable performance
- CSA; Class 1, Div 2, Groups A-D rating
- ATEX rating: II 3 G Ex nA IIB T6
- Combine with the 700PTPK or 700HTPK pump kits for a complete pressure testing solution for up to 600 psi (40 bar) with the PTP-1 pneumatic pump and up to 10,000 psi (690 bar) with the HTP-2 hydraulic pump
- Log up to 8,493 pressure measurements to memory (requires 700G/TRACK software)
- Three-year warranty



Fluke-700PTPK Pneumatic Test Kit

- Combine with any Fluke-700G Series Gauge, 1,000 psi (69 bar) or less, to make a complete pressure testing kit
- Generate pressure up to 600 psi, 40 bar with the 700PTP-1 test pump
- Connect the 700G Series gauge directly to the included PTP-1 hand pump
- Includes hoses and adapters for connecting to the pressure device to be tested
- Hard case protects pump and gauge and allows gauge to remain connected to the pump

Fluke-700HTPK Hydraulic Test Kit

- Combine with any Fluke-700G Series Gauge, 1,000 psi (69 bar) range or greater, to make a complete pressure testing kit
- Generate pressure up to 10,000 psi, 690 bar with the included 700HTP-2 test pump
- Connect the 700G Series gauge directly to the HTP-2 hand pump
- Includes 700HTH-1 hose kit and adapters for connecting to the pressure device to be tested
- Hard case protects pump and gauge and allows gauge to remain connected to the pump

700G/TRACK Logging Software

- Use with 700G Series gauges to perform real time data logging to a PC
- Download logging configurations to the 700G Series gauges for a remote logging event
- Configure logging event reading rate, duration and measurement units
- Upload measurements logged remotely and display or export measurements
- Includes communication cable for connection to a PC

Specifications

| Model | Range | Resolution | Accuracy | Burst pressure |
|---|--|--|--|-----------------------|
| Fluke-700G01 | -10 to +10 inH ₂ O -20 mbar to 20 mbar | 0.001 inH ₂ O 0.001 mbar | Positive pressure ± 0.1 % of range, Vacuum ± 0.1 % of range | 3 psi 210 mbar |
| Fluke-700G02 | -1 to +1 psi -70 mbar to 70 mbar | 0.0001 psi 0.001 mbar | | 5 psi 350 mbar |
| Fluke-700G04 | -14 psi to 15 psi -.97 bar to 1 bar | 0.001 psi 0.0001 bar | Positive pressure ± 0.05 % FS Vacuum ± 0.1 % FS | 60 psi 4 bar |
| Fluke-700G05 | -14 psi to 30 psi -.97 bar to 2 bar | 0.001 psi 0.0001 bar | | 120 psi 8 bar |
| Fluke-700G06 | -12 psi to 100 psi -.83 bar to 6.9 bar | 0.01 psi 0.0001 bar | | 400 psi 26 bar |
| Fluke-700G27 | -12 psi to 300 psi -.83 bar to 20 bar | 0.01 psi 0.001 bar | | 1200 psi 80 bar |
| Fluke-700G07 | -12 psi to 500 psi -.83 bar to 34 bar | 0.01 psi 0.001 bar | | 2000 psi 138 bar |
| Fluke-700G08 | -14 psi to 1000 psi -.97 bar to 69 bar | 0.1 psi 0.001 bar | | 4000 psi 266 bar |
| Fluke-700G10 | -14 to 2000 psi -.97 bar to 140 bar | 0.1 psi 0.01 bar | | 8000 psi 550 bar |
| Fluke-700G29 | -14 psi to 3000 psi -.97 bar to 200 bar | 0.1 psi 0.01 bar | | 10000 psi 690 bar |
| Fluke-700G30 | -14 psi to 5000 psi -.97 bar to 340 bar | 0.1 psi 0.01 bar | | 10000 psi 690 bar |
| Fluke-700G31 | -14 psi to 10000 psi -.97 bar to 690 bar | 1 psi 0.01 bar | | 20000 psi 1035 bar |
| Fluke-700GA4 | 0 to 15 psia 0 to 1 bar absolute | 0.001 psi 0.0001 bar | ± 0.05 % of range | 60 psi 4 bar |
| Fluke-700GA5 | 0 to 30 psia 0 to 2 bar absolute | 0.001 psi 0.0001 bar | | 120 psi 8 bar |
| Fluke-700GA6 | 0 to 100 psia 0 to 6.9 bar absolute | 0.01 psi 0.0001 bar | | 400 psi 27 bar |
| Fluke-700GA27 | 0 to 300 psia 0 to 20 bar absolute | 0.01 psi 0.001 bar | | 1200 psi 80 bar |
| Fluke-700RG05 | -14 to +30 psi -0.97 to +2 bar | 0.001 psi 0.0001 bar | Positive pressure, ± 0.04 % of reading +.01 % of range, Vacuum ± 0.05 % of range | 90 psi 6 bar |
| Fluke-700RG06 | -12 to 100 psi -0.83 to 6.9 bar | 0.01 psi 0.0001 bar | Positive pressure, ± 0.04 % of reading +.01 % of range, Vacuum ± 0.1 % of range | 400 psi 27 bar |
| Fluke-700RG07 | -12 to 500 psi -0.83 to 34 | 0.01 psi 0.001 bar | | 2000 psi 138 bar |
| Fluke-700RG08 | -14 to 1000 psi -0.97 to 69 bar | 0.1 psi 0.001 bar | | 4000 psi 275 bar |
| Fluke-700RG29 | -14 to 3000 psi -0.97 to 200 bar | 0.1 psi 0.01 bar | | 10000 psi 690 bar |
| Fluke-700RG30 | -14 to 5000 psi -0.97 to 340 bar | 0.1 psi 0.01 bar | | 15000 psi 1035 bar |
| Fluke-700RG31 | -14 to 10000 psi -0.97 to 690 bar | 1 psi 0.01 bar | | 20000 psi 1380 bar |
| 700R Ranges: Temperature Compensation 0 e°C to 50 °C (32 °F to 122 °F) to rated accuracy. For temperatures from -10 °C to 0 °C and 50 °C to 55 °C, add .005 % FS/°C | | | | |
| Media compatibility <ul style="list-style-type: none"> • 10 inH₂O, 1, 15, 30 psi: any clean dry non-corrosive gas • 100, 300, 500, 1000 psi: any liquids or gases compatible with 316 stainless steel and above 1000 psi: any non-flammable, non-toxic, non-explosive, non-oxidizing liquid or gas compatible with 316 stainless steel. | | | | |

| Mechanical specifications | |
|----------------------------------|--|
| Dimensions (HxWxD) | 12.7 cm x 11.4 cm x 3.7 cm (5in x 4.5in x 1.5in) |
| Pressure connection | ¼ in NPT Male |
| Housing/Weight | Cast ZNAl 0.56 kg (1.22 lb) with holster |
| Display | 5 ½ digits, 16.53 mm (0.65 in) high 20-segment bar graph, 0 to 100% |
| Power | Three AA alkaline batteries |
| Battery life | 1,500 hours without backlight (continuous on), 2,000 hours at slow sample rate |

Ordering information

| | |
|----------------------|--|
| Fluke-700G01 | Pressure Gauge, ±10 inH ₂ O WC (0.4 PSIG) |
| Fluke-700G02 | Pressure Gauge, ±30 inH ₂ O WC (1 PSIG) |
| Fluke-700G04 | Pressure Gauge, ± 15 PSIG |
| Fluke-700G05 | Pressure Gauge, 30 PSIG |
| Fluke-700G06 | Pressure Gauge, 100 PSIG |
| Fluke-700G27 | Pressure Gauge, 300 PSIG |
| Fluke-700G07 | Pressure Gauge, 500 PSIG |
| Fluke-700G08 | Pressure Gauge, 1000 PSIG |
| Fluke-700G10 | Pressure Gauge, 2000 PSIG |
| Fluke-700G29 | Pressure Gauge, 3000 PSIG |
| Fluke-700G30 | Pressure Gauge, 5000 PSIG |
| Fluke-700G31 | Pressure Gauge, 10000 PSIG |
| Fluke-700GA4 | Pressure Gauge, 15 PSIA |
| Fluke-700GA5 | Pressure Gauge, 30 PSIA |
| Fluke-700GA6 | Pressure Gauge, 100 PSIA |
| Fluke-700GA27 | Pressure Gauge, 300 PSIA |
| Fluke-700RG05 | Pressure Gauge, Reference, 30 PSIG |
| Fluke-700RG06 | Pressure Gauge, Reference, 100 PSIG |
| Fluke-700RG07 | Pressure Gauge, Reference, 500 PSIG |
| Fluke-700RG08 | Pressure Gauge, Reference, 1000 PSIG |
| Fluke-700RG29 | Pressure Gauge, Reference, 3000 PSIG |
| Fluke-700RG30 | Pressure Gauge, Reference, 5000 PSIG |
| Fluke-700RG31 | Pressure Gauge, Reference, 10000 PSIG |
| 700G/TRACK | Data logging software and cable |
| Fluke-700HTPK | Hydraulic test pump kit, 0 to 10000 PSI/690 BAR |
| Fluke-700PTPK | Pneumatic test pump kit, 0 to 600 PSI/40 BAR |

Included accessories (Gauges)

Manual on CD-ROM in 14 languages

Traceable certificate of calibration

1/4" NPT to 1/4" ISO adapter