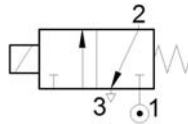
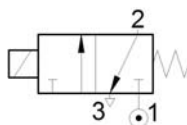


GAS OVER OIL CONTROL CABINET VALVE



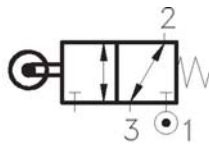
3/2 normally closed Solenoid valve
 Pressure 0 - 150 bar
 Media gas, oil, air etc.
 Ports : Threaded, sub base mounted
 Body material SS 316/ Aluminium hard anodized

**TYPE : 30150 Subbase Port
 30152 Threaded Port**



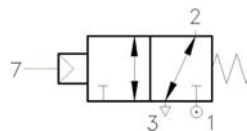
3/2, NC solenoid valve
 Pressure 0 - 150 bar
 Media gas, oil, air, etc.
 Ports : Sub base mounted. (No manual override).
 Inter valve body material SS 316/ Aluminium hard anodized

**TYPE : 30150 Subbase
 30152 Threaded Port**




3/2 Roller operated Valve
 Pressure 0 - 150 bar
 Media gas, oil, air, etc.
 Ports : threaded
 Body material SS 316

TYPE : DSA201- SU



3/2 Air operated valve
 Pressure 0 - 150 bar
 Media gas, oil, air, etc.
 Media pressure 0 - 150 bar
 Pilot pressure 5 - 150 bar
 Pilot pressure minimum 5 bar or ≥ main fluid pressure whichever is higher.
 Pilot media Air/ Gas/ Oil
 Body material SS 316

**TYPE : 3359 Air Operated
 3383 Solenoid Operated**

 *Valve having Aluminium hard anodized body may have minor leakage across port
 Valve body material is normally from Stainless Steel