



ST 20

Elektrofahwerk
"normale Bauhöhe"

"Standard headroom"
electric trolley

Chariot électrique
"hauteur perdue normale"

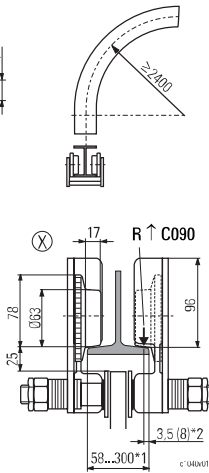
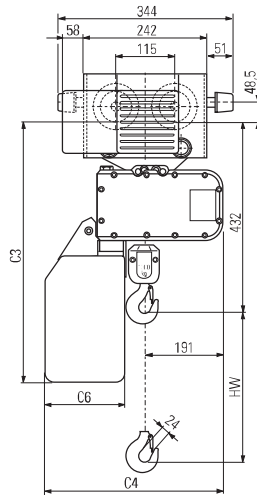
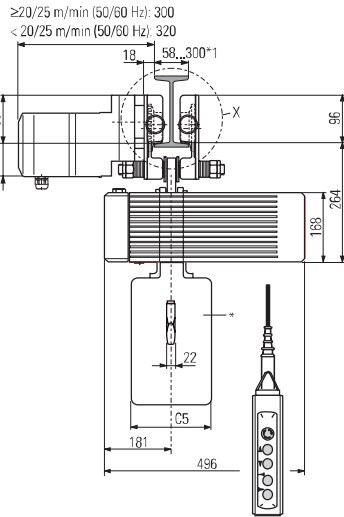
1/1

| HW | KFN 10.20E | | | | K | T | S | Option |
|-----|------------|-----|-----|-----|---|---|----------|--------|
| | C3 | C4 | C5 | C6 | | | | |
| [m] | [mm] | | | | | | | |
| 8 | 558 | 398 | 160 | 160 | K | T | Standard | |
| 16 | 645 | 393 | 150 | 155 | T | T | | |
| 22 | 725 | 393 | 150 | 155 | T | T | | |
| 30 | 715 | 393 | 320 | 155 | S | T | | |
| 40 | 765 | 393 | 320 | 155 | S | T | | |
| 8 | 545 | 393 | 150 | 155 | S | S | Option | |
| 16 | 645 | 393 | 150 | 155 | S | S | | |
| 22 | 725 | 393 | 150 | 155 | S | S | | |

Auswahltabelle: ↑ 9

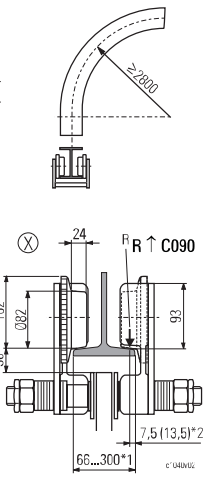
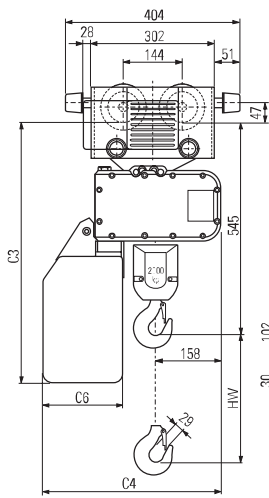
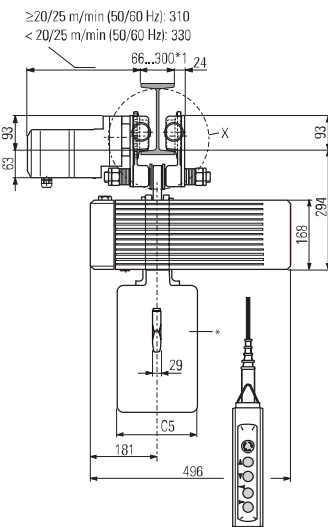
Selection table: ↑ 9

Tableau de sélection : ↑ 9



2/1

| HW | KFN 32.20E | | | | K | T | S | Option |
|-----|------------|-----|-----|-----|---|---|----------|--------|
| | C3 | C4 | C5 | C6 | | | | |
| [m] | [mm] | | | | | | | |
| 4 | 589 | 398 | 160 | 160 | K | T | Standard | |
| 8 | 676 | 393 | 150 | 155 | T | T | | |
| 11 | 756 | 393 | 150 | 155 | T | T | | |
| 15 | 746 | 393 | 320 | 155 | S | T | | |
| 20 | 796 | 393 | 320 | 155 | S | T | | |
| 4 | 576 | 393 | 150 | 155 | S | S | Option | |
| 8 | 676 | 393 | 150 | 155 | S | S | | |
| 11 | 756 | 393 | 150 | 155 | S | S | | |



* Material des Kettenspeichers
K = Kunststoff
S = Stahlblech
T = Textil

*1 Standard; bei Flanschbreite >260 mm sind Führungsrollen erforderlich

*2 Bei geneigtem Flansch

* Material of chain box
K = Plastic
S = Sheet metal
T = Fabric

*1 Standard; guide rollers necessary for flange width >260 mm

*2 With sloping flange

* Matériau du bac à chaîne
K = Matière plastique
S = Tôle d'acier
T = Textile

*1 Standard; rouleaux de guidage nécessaires pour largeur d'aile >260 mm.

*2 Avec bride inclinée