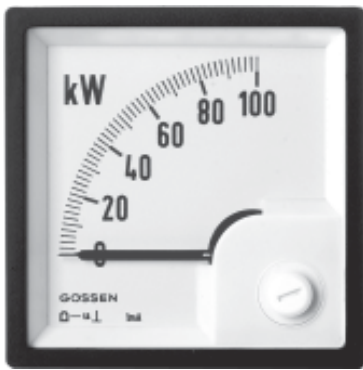


# Basic Series • Square Panel Meters

For Active Power or Reactive Power



DLMQB 96

Moving-coil movement, 90° scale white, imprint black  
Narrow front frame dull black per DIN 43718, anti-glare glass

Front Dimensions mm Type	96 x 96 DLMQB 96
Scale Length mm	97
Accuracy Class	1.5
Max. Weight (standard model)	0.56 kg
Max. Operating Voltage	600 V
Test Voltage	5.8 kV
Front Housing-Panel Protection	IP 52
Input Meter	1 mA

## Description

Analog panel meter with core-magnet moving-coil movement and built in power converter for active and reactive power. Depending upon type of system and power, the power converter consists of one, two or three multipliers. The multipliers function in accordance with the TDM process (time division multiplier). The output signals from the multipliers are added and fed to the moving coil mechanism.

## Display

Scale Division Coarse-fine

Pointer Beam pointer with edge-knife

## Mechanical Design

Housing Material Polycarbonate, self-extinguishing and drip-proof per UL94V-0

Mounting Fasteners Screw Clamp

Scale Interchangeable Scales  
⇒ Scales may only be replaced under voltage-free conditions!

Replaceable Front frames and glass faceplates  
⇒ May only be replaced under voltage-free conditions

Terminals M4 screw terminals with self-lifting terminal clips. Screws can be turned with a cross-head or standard screw drivers.

Contact Protection Finger-safe terminal cover included

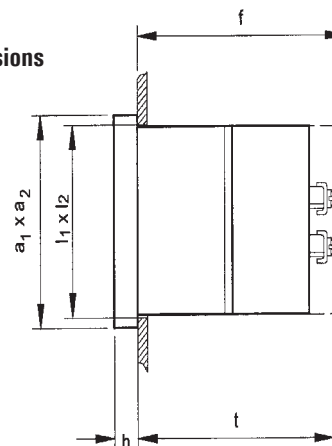
## Power Consumption

Connection	Power Consumption
Current Path	approx. 0.2 VA
Voltage Path	≤ 4.3 VA

## Reference Conditions

Reference Quantities	Reference Conditions
Ambient Temperature	23°C ± 2°C
Position of Use	control panel vertical ± 1°
Frequency	50 Hz ± 2 %
Current Components	20 ... 120% of rated value
Voltage Components	98 ... 102% of rated value
Warm-Up Time	≥ 5 min.
Other	DIN EN 60051

## Basic Dimensions



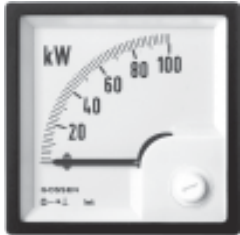
Front in mm	Nominal Dimensions		Cutout Dimensions, mm $l_1 \times l_2$	Installation Depth Including Terminals (t), mm M4	Installation Depth Including Full Covers (f), mm
	$a_1 \times a_2$	h			
96 x 96	96 x 96	5.5	$92^{+0.8} \times 92^{+0.8}$	117	126

## Basic Series • Square Panel Meters

For Active Power or Reactive Power



Moving-coil movement, 90° scale white, imprint black  
Narrow front frame dull black per DIN 43 718, anti-glare glass

Type	Oder No.	Front Dimensions 96 x 96 mm
DLMQB 96 – P1 W	55004 73100 B	
DLMQB 96 – P3 Wg	55004 73110 B	
DLMQB 96 – P3 Wu	55004 73120 B	
DLMQB 96 – P4 Wg	55004 73130 B	
DLMQB 96 – P4 Wu	55004 73140 B	
DLMQB 96 – P1 B	55004 73150 B	
DLMQB 96 – P3 Bg	55004 73160 B	
DLMQB 96 – P3 Bu	55004 73170 B	
DLMQB 96 – P4 Bg	55004 73180 B	
DLMQB 96 – P4 Bu	55004 73190 B	

DLMQB 96

**Ordering Example:**

**DLMQB 96**    **P4**    **Wu**    **0–60 kW**    **400 V**    **100/5 A**  
 (Bu)

Type ————  
 Power 4-Wire ————  
 Unbalanced Load Active Power  
 (Unbalanced Load Reactive Power)  
 Range ————  
 Nominal Voltage ————  
 Transformer ————

### Notes concerning the Determination of Measuring Ranges

The upper measuring range should be a standard value per DIN 43 701: 1 – 1.2 – 1.5 – 2 – 2.5 – 3 – 4 – 5 – 6 – 7.5 – 8 and corresponding powers of ten. The upper measuring range value must lie within a range of 0.5 to 1.2 times apparent power.

Apparent power  $P_s$  is calculated from the primary values from the current and voltage transformers:

- Single-Phase AC     $P_s = U \times I$
- Three Phase     $P_s = U \times I \times \sqrt{3}$

where U equals phase-to-phase voltage.